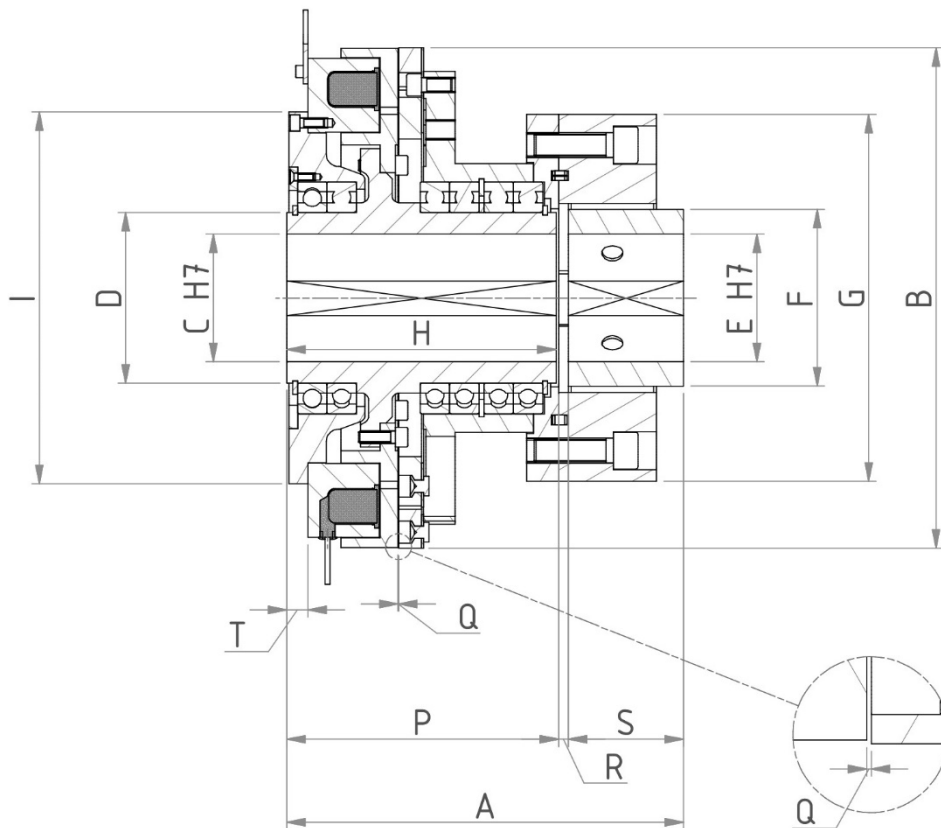
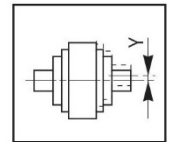
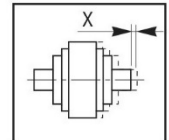
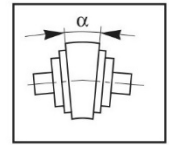
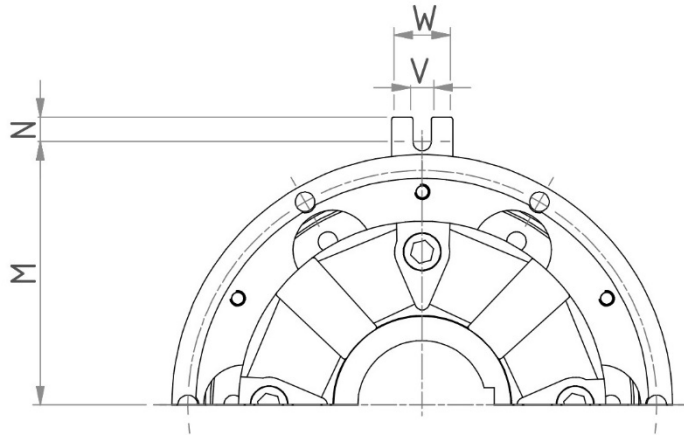


SERIE/MODEL
CODICE/CODE

EMSL □□□/DF-GE
08.26.□□□.51



CARATTERISTICHE TECNICHE
DATASHEET

	90	120	150	170	210	260	310	400	500	600
Mom. Inseribile Mi (Nm) <i>Eng. Torque Mi (Nm)</i>	29	58	105	160	350	570	1150	2300	3450	5100
Mom. Statico Ms (Nm) <i>Stat. Torque Ms (Nm)</i>	45	90	160	250	550	900	1800	3600	5400	8000
Giri max. <i>Max. R.P.M.</i>	6000	4500	4250	4000	3000	2800	2200	1600	1400	1200
Tempo Inser. (ms) <i>Build Up Time (ms)</i>	75	100	138	182	286	363	473	616	715	800
Tempo Disin. (ms) <i>Decay Time (ms)</i>	35	46	66	83	132	180	242	330	385	400
Potenza (W) <i>Power (W)</i>	35	50	56	65	85	120	240	280	440	576
Grandezza giunto <i>Coupling size</i>	2	4	8	12	25	30	90	200	250	400
Inerzia lato Rot Jr (Kgm²)^a <i>Rot. side Inertia Jr (Kgm²)^a</i>	0,0004	0,0017	0,0034	0,0076	0,0235	0,639	0,1620	0,5322	1,2762	3,0425
Inerzia lato Arm Ja (Kgm²)^a <i>Arm. side Inertia Ja (Kgm²)^a</i>	0,0008	0,0023	0,0056	0,0093	0,0341	0,0793	0,3518	0,9143	1,8262	4,4761
Peso (Kg)^a <i>Weight (Kg)^a</i>	2,35	5,36	8,50	10,90	21,30	33,63	71,84	133,74	205,00	383,74

^a: **MOZZI MASSICCI**
^a: **MASSIVE HUBS**

TABELLA DIMENSIONALE
SIZE TABLE

	90	120	150	170	210	260	310	400	500	600
A	99	124	142	158	203	224	270	324	370	515
B	90	124,5	149,5	169	216	266	327	409	497	606
C max.	26	38	44	44	55	65	85	105	115	150
D	35	50	55	55	70	80	105	140	160	190
E max.	26	30	38	38	55	65	85	105	115	120
F	40	45	60	60	85	100	125	145	160	170
G	85	100	120	122	170	200	260	300	340	370
H	67	88	96	112	142	150	180	220	258	377
I	--	--	--	130	168	206	258	304	358	458
M	51	65	78	91	125	150	180	215	260	315
N	7	7	7	10	10	10	10	20	20	25
P	67	90	96	112	142	150	182	222	262	380
Q	0,2	0,3	0,3	0,3	0,4	0,5	0,5	0,6	0,7	0,8
R	4	4	4	4	6	8	8	8	8	10
S	28	30	42	42	55	66	80	94	100	125
T	2,2	3,6	5,7	11	12	9	12	17,3	17	43
V	5,5	5,5	5,5	8	10	10	10	15	15	20
W	19	19	19	23	25	25	25	50	50	60
X	2	2	2	2	3	3	3	3	3	3
Y	1	1	1	1	1	1	1	1	1	1
α	1°	1°	1°	1°	1°	1°	1°	1°	1°	1°