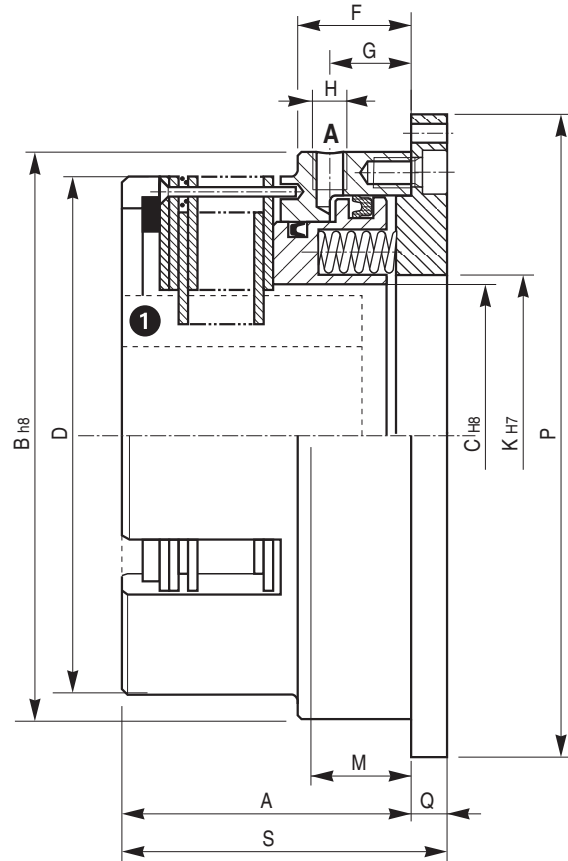
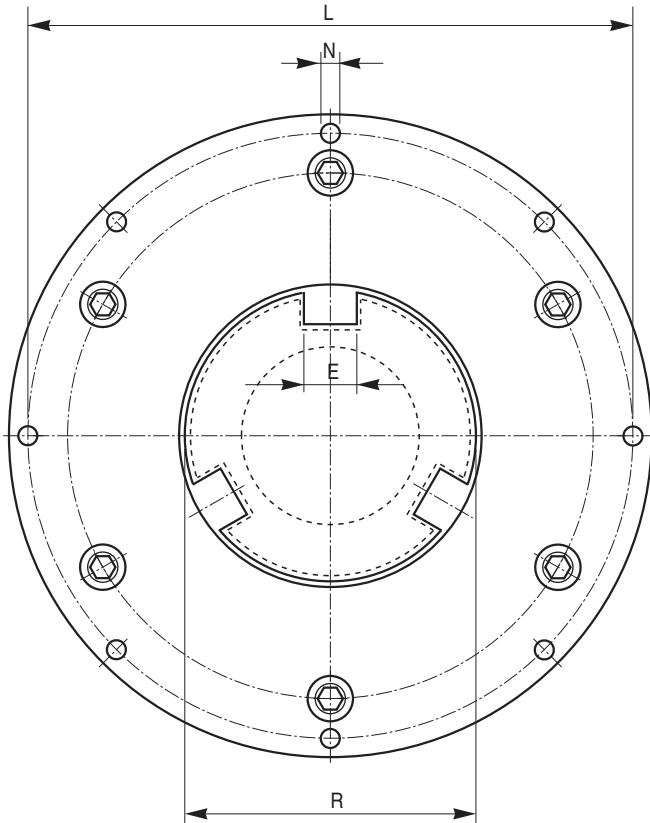


SERIE / MODEL
CODICE / CODE

1 FPL-N □□□ /C-BF
03.40.□□□.02

2 FOL-N □□□ /C-BF
03.70.□□□.02



A = Alimentazione aria / Air supply

NOTA - Per funzionamento in scatola a bagno d'olio: dischi in acciaio
NOTE - For run in oil-bath box, the brke disks are all made of steel

(*) Vedi pag. 87 / See pag 87

□□□	Momento Torque Ms(Nm)	Pressione di apertura Release pressure bar	Giri/1' R.P.M. max	Volume cilindro Cilinder volume (cm ³)	Dischi interni Internal plates N.	Peso Weight (kg)	Mozzo Hub a richiesta/on demand ①
002	95	6	3000	14	5	3,9	MF2
003	150	6	2800	18	6	5,3	MF3
004	300	6	2400	35	6	6,7	MF46
006	650	6	2000	41	6	13,5	MF6
008	1200	6	1800	77	6	23,7	MF8/10
010	2400	6	1400	135	7	35,4	MDF-N230/S (*)

□□□	A	B	C	D	E	F	G	H	K	L	M max	N n° x Ø	P	Q	R	S
002	59,5	118	48	92	9	32	24	1/8"	50	130	33,5	6 x 6,5	142	10	47,15	69,5
003	67,5	135	57	108	9	32	24	1/8"	58	147	35,5	6 x 6,5	159	10	55	77,5
004	73	155	70	118	12	37	26	1/8"	72	168	40	8 x 6,5	184	10	66	83
006	92,5	192	87	148	14	42	31,5	1/4"	89	207	63	8 x 8,5	222	14	86	106,5
008	109,5	235	102	188	12,3	50,5	35	1/4"	110	250	59	12 x 8,5	265	14	100,5	123,5
010	116	280	150	248	(*)	58	42	1/4"	150	298	62	12 x 10,5	316	15,5	140	131,5