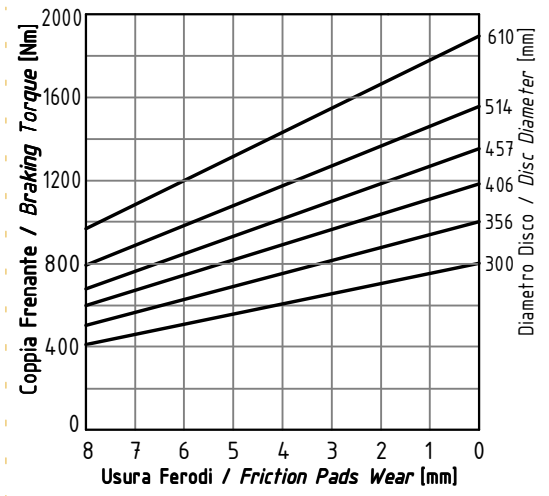
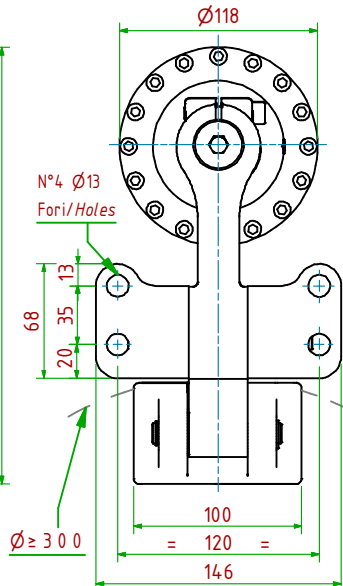
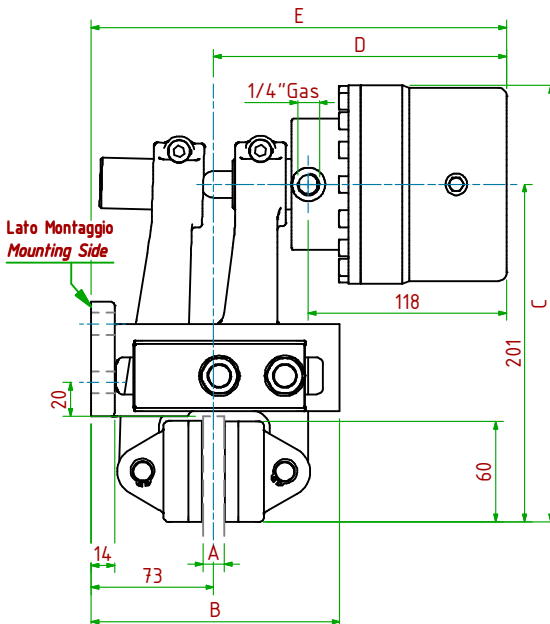


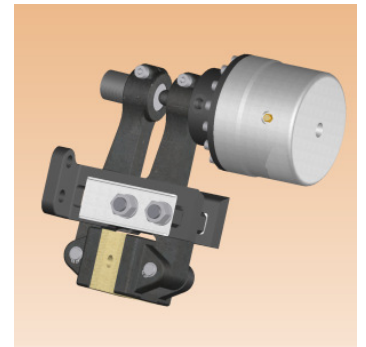
**POHP-N330/**

**Oleodinamico Negativo / Hydraulically Released**



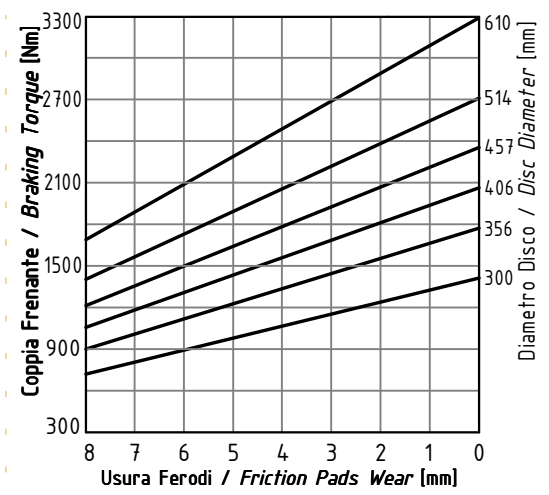
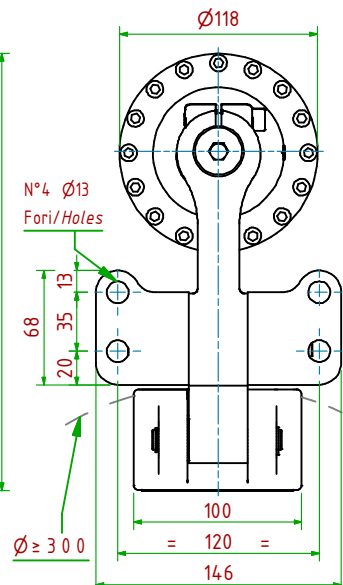
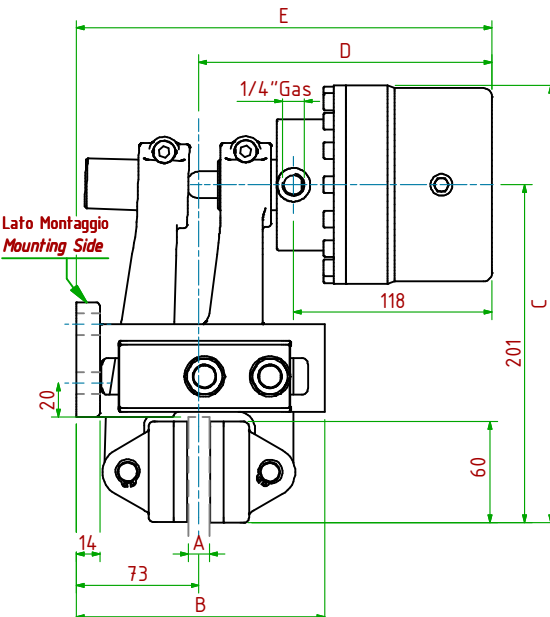
- Pressione di Apertura/Release Pressure:  **$P_a=30\text{bar}$**  - Volume Max Cilindro/Max Cylinder Volume:  **$32\text{cm}^3$**
- Coppia Frenante/Braking Torque:  **$M_d = [F_t \times (\Phi(m)/2 - 0.033(m))]$**
- Importante:** La Coppia Frenante Iniziale può essere più bassa del 30%-50% **Warning:** Initial Braking Torque can be lower of 30%-50%
- Usura Ferodi Massima Totale/Maximum total wear of pads =9mm

MODELLO / MODEL	CODICE / CODE	A	B	C	D <sub>Max</sub>	E <sub>Max</sub>	Forza Frenante/Braking Force	Peso
POHP-N330/12.7	19.46.330.03	12.7	148	260	174	247	F <sub>t</sub> =6900N (0bar)	12.2kg
POHP-N330/25.4	19.46.330.04	25.4	148	260	180	253	F <sub>t</sub> =6900N (0bar)	12.4kg



**POHP-N340/**

**Oleodinamico Negativo / Hydraulically Released**



- Pressione di Apertura/Release Pressure:  **$P_a=50\text{bar}$**  - Volume Max Cilindro/Max Cylinder Volume:  **$32\text{cm}^3$**
- Coppia Frenante/Braking Torque:  **$M_d = [F_t \times (\Phi(m)/2 - 0.033(m))]$**
- Importante:** La Coppia Frenante Iniziale può essere più bassa del 30%-50% **Warning:** Initial Braking Torque can be lower of 30%-50%
- Usura Ferodi Massima Totale/Maximum total wear of pads =9mm

MODELLO / MODEL	CODICE / CODE	A	B	C	D <sub>Max</sub>	E <sub>Max</sub>	Forza Frenante/Braking Force	Peso
POHP-N340/12.7	19.46.340.03	12.7	148	260	174	247	F <sub>t</sub> =12100N (0bar)	12.4kg
POHP-N340/25.4	19.46.340.04	25.4	148	260	180	253	F <sub>t</sub> =12100N (0bar)	12.6kg

