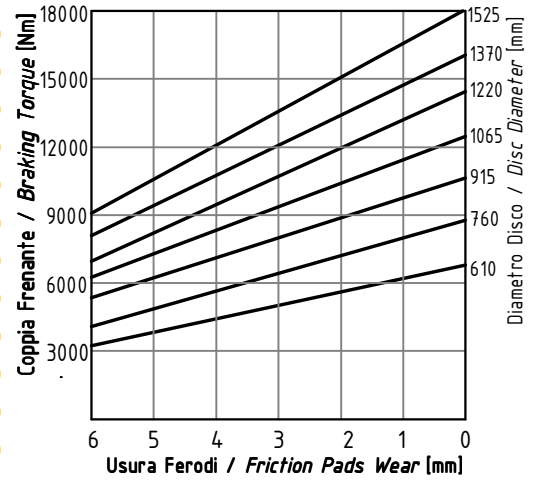
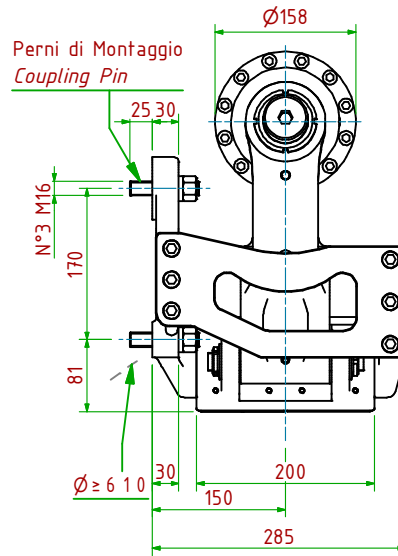
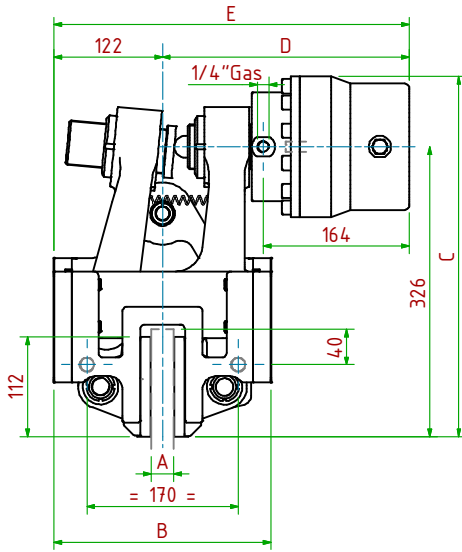


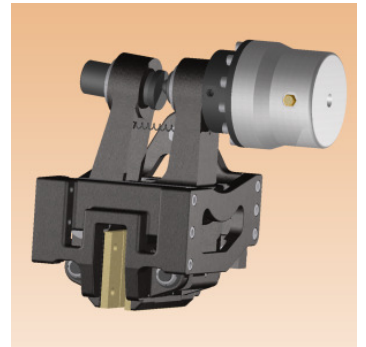
POT-N064/

Oleodinamico Negativo / Hydraulically Released



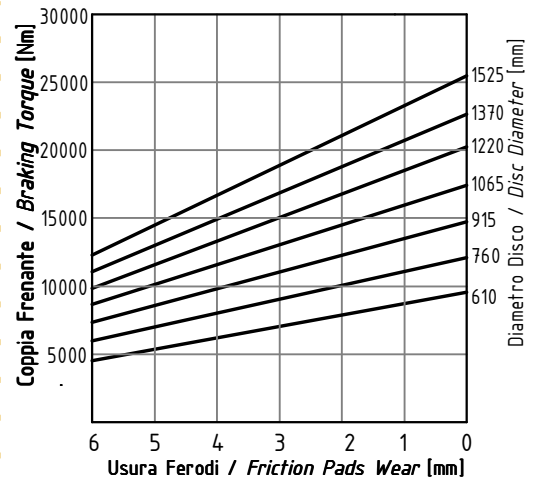
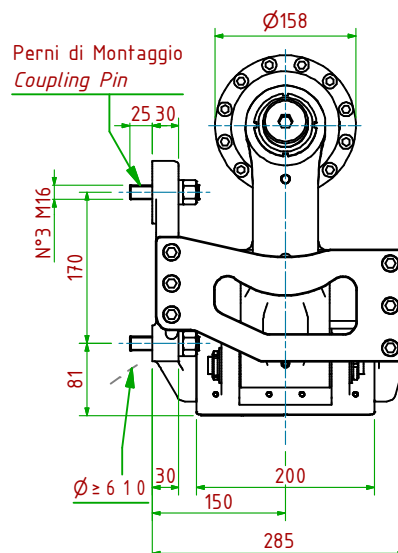
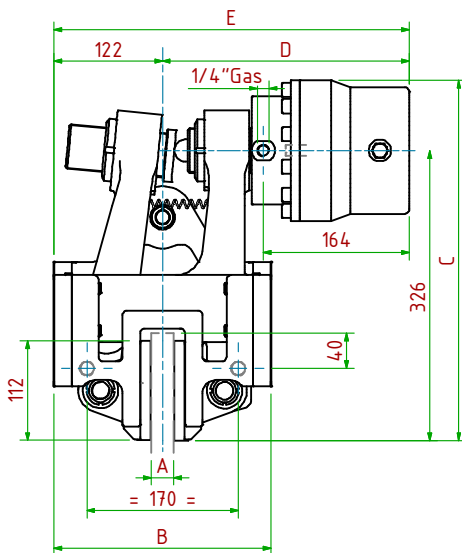
- Pressione di Apertura/Release Pressure: **Pa=26bar** - Volume Max Cilindro/Max Cylinder Volume: **150cm³**
- Coppia Frenante/Braking Torque: **Md= [Ftx(Φ(m)/2-0.065(m))]**
- Importante:** La Coppia Frenante Iniziale può essere più bassa del 30%-50% **Warning:** Initial Braking Torque can be lower of 30%-50%
- Usura Ferodi Massima Totale/Maximum total wear of pads =12mm

MODELLO/ MODEL	CODICE/ CODE	A	B	C	D _{Max}	E _{Max}	Forza Frenante/Braking Force	Peso
POT-N064/25.4	19.46.064.04	25.4	244	405	278	400	Ft= 25000N (0bar)	65.0kg
POT-N064/ 30	19.46.064.05	30	244	405	278	400	Ft= 25000N (0bar)	65.0kg
POT-N064/ 40	19.46.064.06	40	244	405	283	405	Ft= 25000N (0bar)	65.0kg



POT-N066/

Oleodinamico Negativo / Hydraulically Released



- Pressione di Apertura/Release Pressure: **Pa=35bar** - Volume Max Cilindro/Max Cylinder Volume: **150cm³**
- Coppia Frenante/Braking Torque: **Md= [Ftx(Φ(m)/2-0.065(m))]**
- Importante:** La Coppia Frenante Iniziale può essere più bassa del 30%-50% **Warning:** Initial Braking Torque can be lower of 30%-50%
- Usura Ferodi Massima Totale/Maximum total wear of pads =12mm

MODELLO/ MODEL	CODICE/ CODE	A	B	C	D _{Max}	E _{Max}	Forza Frenante/Braking Force	Peso
POT-N066/25.4	19.46.066.04	25.4	244	405	278	400	Ft= 35000N (0bar)	65.3kg
POT-N066/ 30	19.46.066.05	30	244	405	278	400	Ft= 35000N (0bar)	65.3kg
POT-N066/ 40	19.46.066.06	40	244	405	278	405	Ft= 35000N (0bar)	65.3kg

