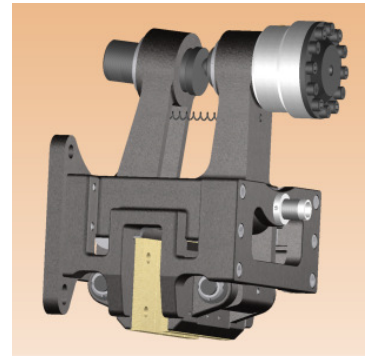
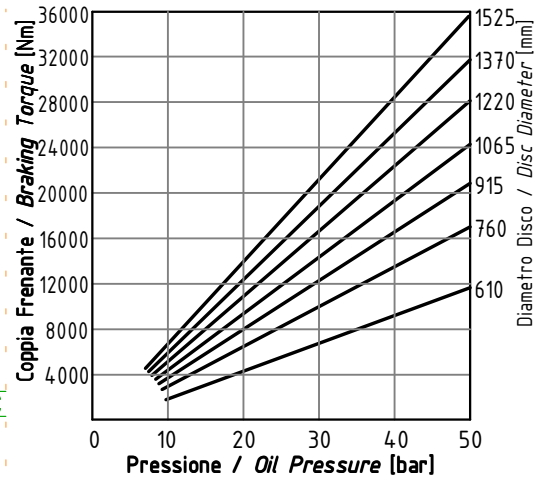
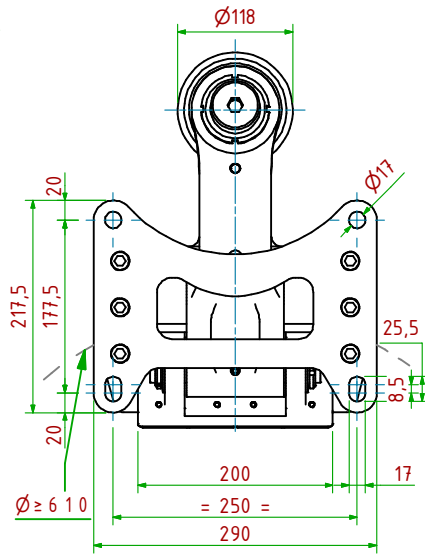
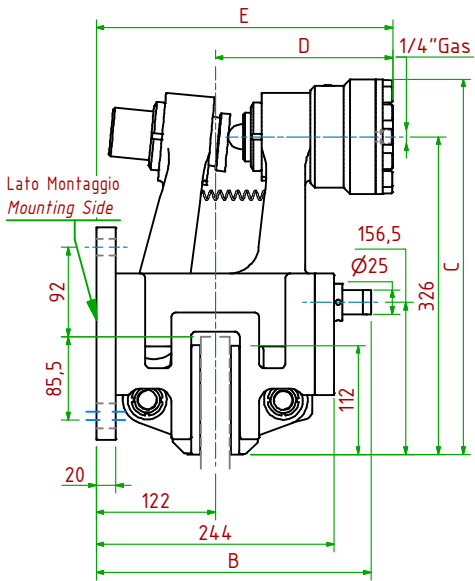


POTP640/

Oleodinamico / Hydraulically Applied

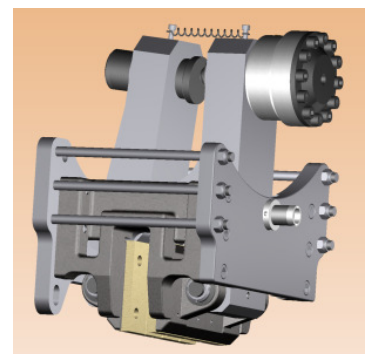
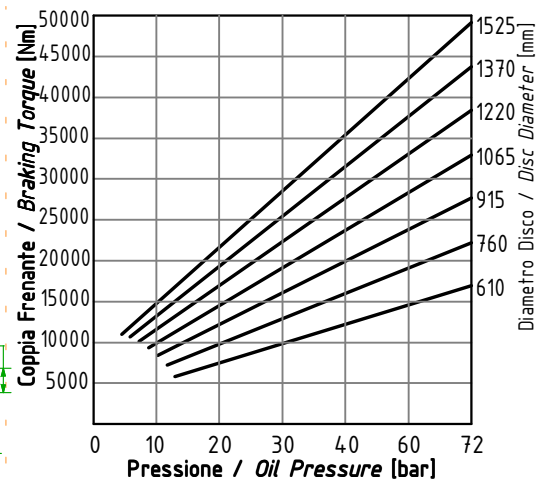
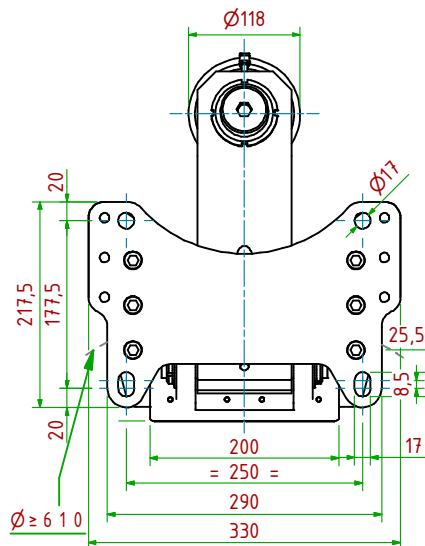
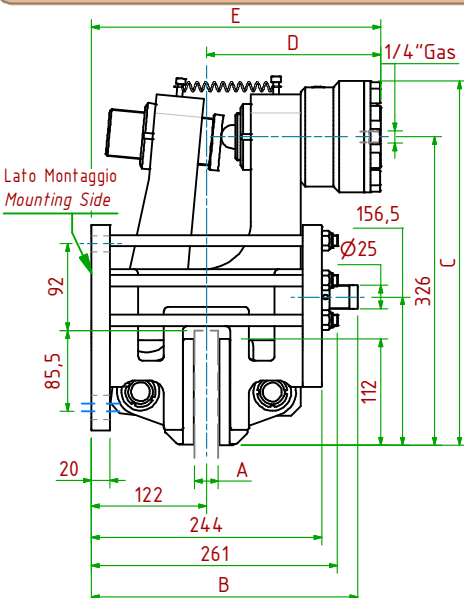


- Pressione di Lavoro/Operating Pressure: **Pl=50bar** - Volume Max Cilindro/Max Cylinder Volume: **110cm³**
- Coppia Frenante/Braking Torque: **Md= [Ftx(Φ(m)/2-0.065(m))]**
Importante: La Coppia Frenante Iniziale può essere più bassa del 30%-50% **Warning:** Initial Braking Torque can be lower of 30%-50%
- Usura Ferodi Massima Totale/Maximum total wear of pads =12mm

MODELLO/MODEL	CODICE/ CODE	A	B	C	D _{Max}	E _{Max}	Forza Frenante/Braking Force	Peso
POTP640/25.4	19.26.640.04	25.4	282	385	183	305	Ft= 48800N (50bar)	58.0kg
POTP640/ 30	19.26.640.05	30	282	385	183	305	Ft= 48800N (50bar)	58.0kg
POTP640/ 40	19.26.640.06	40	287	385	188	310	Ft= 48000N (50bar)	58.0kg

POTP700/

Oleodinamico / Hydraulically Applied



- Pressione di Lavoro/Operating Pressure: **Pl=72bar** - Volume Max Cilindro/Max Cylinder Volume: **110cm³**
- Coppia Frenante/Braking Torque: **Md= [Ftx(Φ(m)/2-0.065(m))]**
Importante: La Coppia Frenante Iniziale può essere più bassa del 30%-50% **Warning:** Initial Braking Torque can be lower of 30%-50%
- Usura Ferodi Massima Totale/Maximum total wear of pads =12mm

MODELLO/ MODEL	CODICE/ CODE	A	B	C	D _{Max}	E _{Max}	Forza Frenante/Braking Force	Peso
POTP700/25.4	19.26.700.04	25.4	282	385	183	305	Ft= 70500N (72bar)	76.6kg
POTP700/ 30	19.26.700.05	30	282	385	183	305	Ft= 70500N (72bar)	76.6kg
POTP700/ 40	19.26.700.06	40	287	385	188	310	Ft= 70500N (72bar)	76.6kg