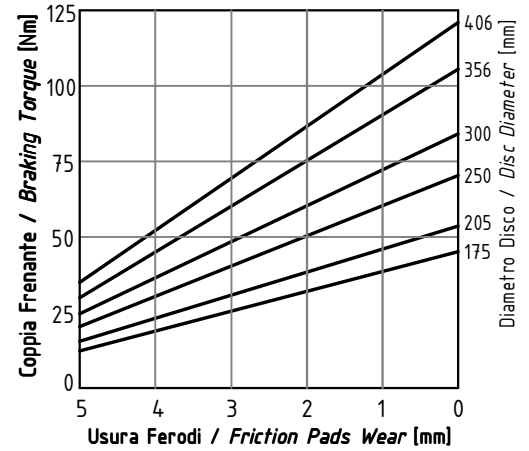
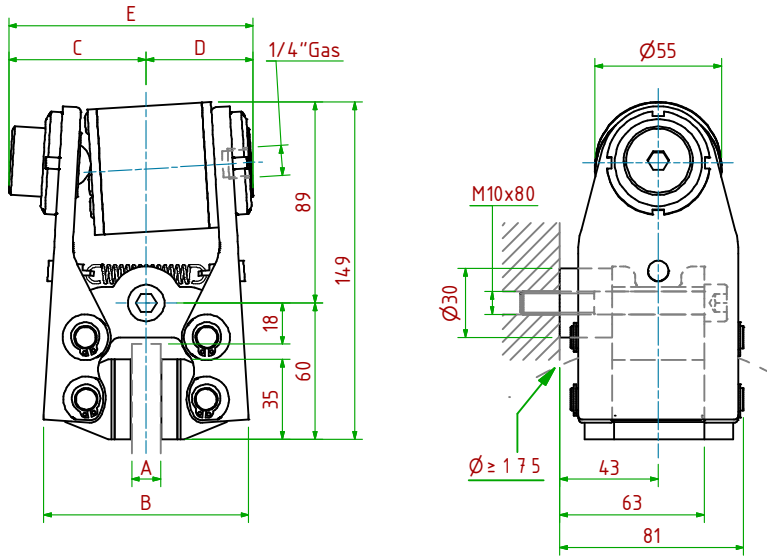


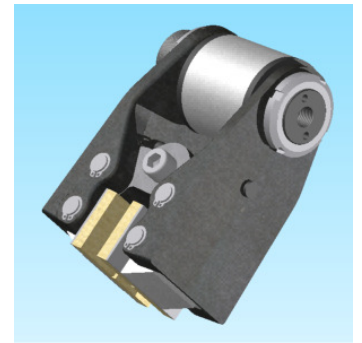
PPB-N001/□□□

Pneumatico Negativo/Pneumatically Released



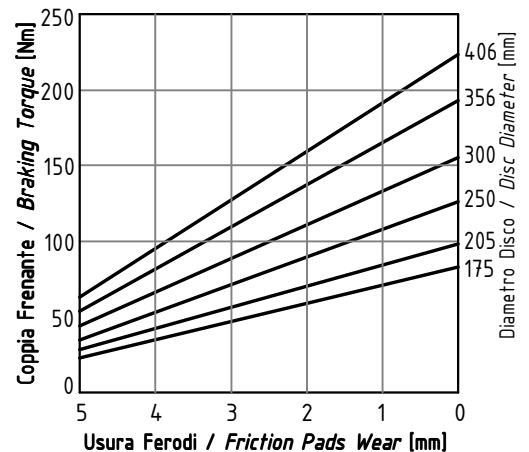
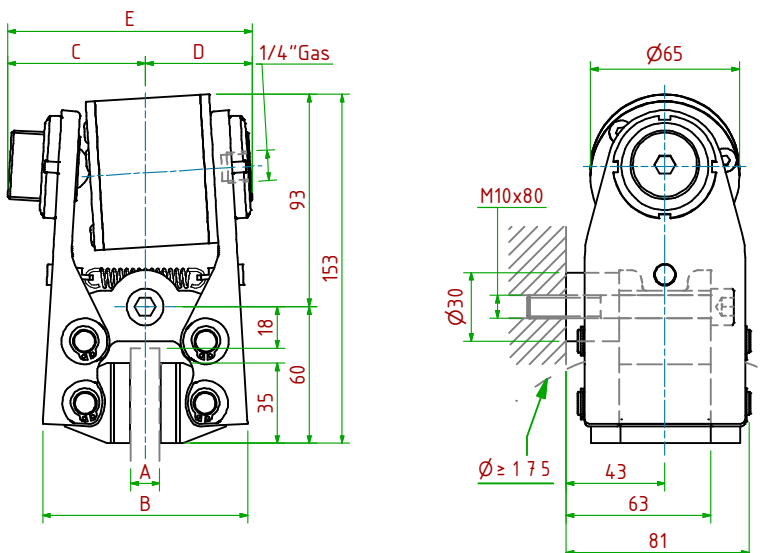
- Pressione di Apertura/Release Pressure: **Pa= 6bar** - Volume Max Cilindro/Max Cylinder Volume: **11cm³**
- Coppia Frenante/Braking Torque: **Md= [Ftx(Φ(m)/2-0.024(m))]**
- Importante:** La Coppia Frenante Iniziale può essere più bassa del 30%-50% **Warning:** Initial Braking Torque can be lower of 30%-50%
- Usura massima totale Ferodi/Maximum total wear of pads =7mm

MODELLO/ MODEL	CODICE/ CODE	A	B	C	D _{Max}	E _{Max}	Forza Frenante/Braking Force	Peso
PPB-N001/ 08	19.36.001.02	8	86	60	55	115	Ft= 680N (0bar)	2.9kg
PPB-N001/12.7	19.36.001.03	12.7	90	60	56	116	Ft= 680N (0bar)	3.0kg
PPB-N001/25.4	19.36.001.04	25.4	102	60	63	123	Ft= 680N (0bar)	3.1kg



PPB-N002/□□□

Pneumatico Negativo/Pneumatically Released



- Pressione di Apertura/Release Pressure: **Pa= 6bar** - Volume Max Cilindro/Max Cylinder Volume: **19cm³**
- Coppia Frenante/Braking Torque: **Md= [Ftx(Φ(m)/2-0.024(m))]**
- Importante:** La Coppia Frenante Iniziale può essere più bassa del 30%-50% **Warning:** Initial Braking Torque can be lower of 30%-50%
- Usura massima totale Ferodi/Maximum total wear of pads =7mm

MODELLO/ MODEL	CODICE/ CODE	A	B	C	D _{Max}	E _{Max}	Forza Frenante/Braking Force	Peso
PPB-N002/ 08	19.36.002.02	8	86	60	55	115	Ft= 1250N (0bar)	3.1kg
PPB-N002/12.7	19.36.002.03	12.7	90	60	56	116	Ft= 1250N (0bar)	3.2kg
PPB-N002/25.4	19.36.002.04	25.4	102	60	63	123	Ft= 1250N (0bar)	3.3kg

