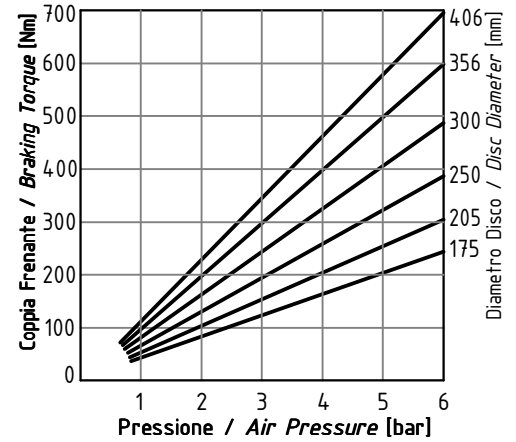
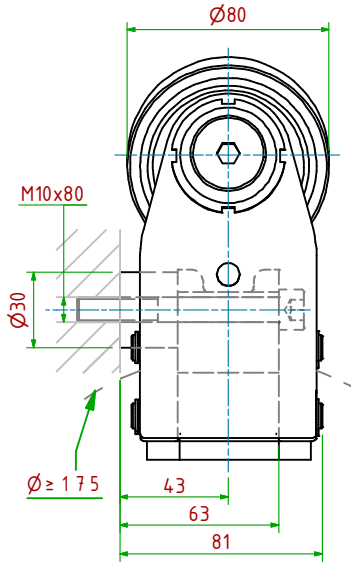
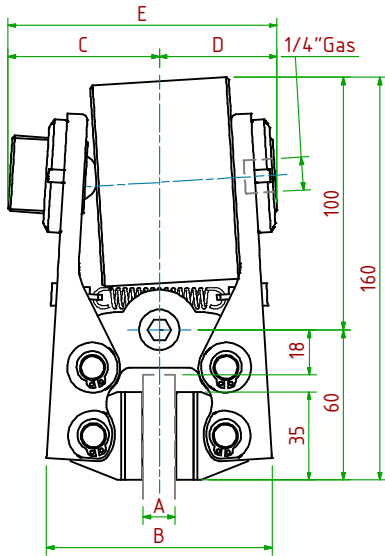


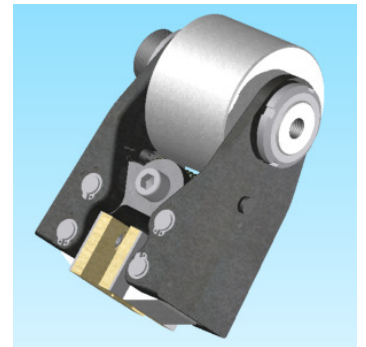
PPB003/

Pneumatico / Pneumatically Applied



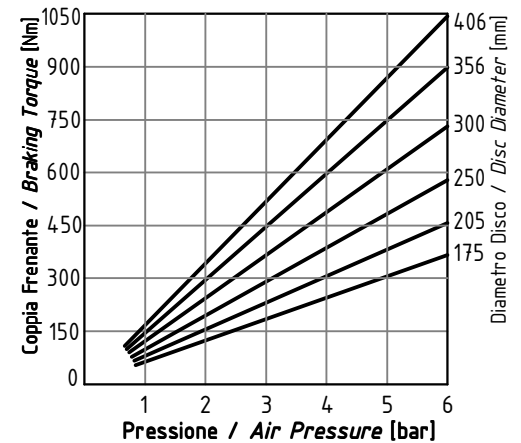
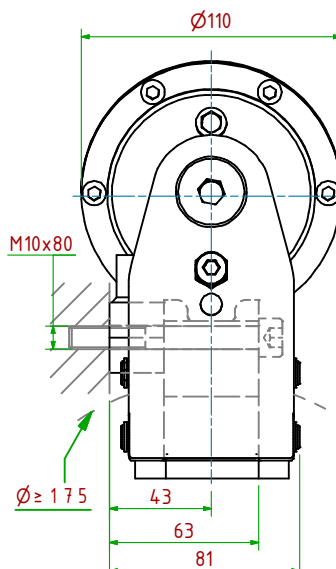
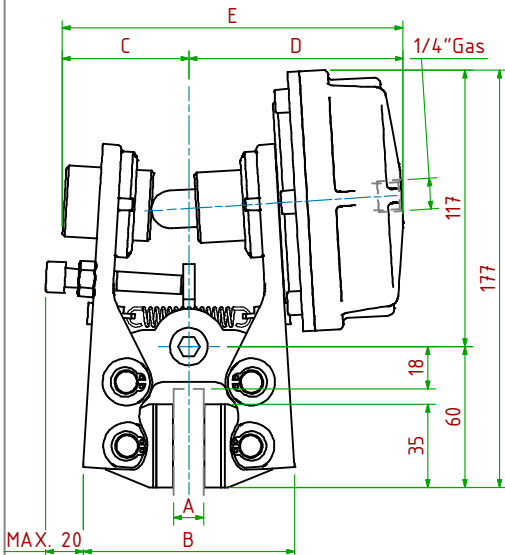
- Pressione di Lavoro/Operating Pressure: **Pl= 6bar** - Volume Max Cilindro/Max Cylinder Volume: **16 cm³**
- Coppia Frenante/Braking Torque: **Md= [Ftx(Φ(m)/2-0.024(m))]**
Importante: La Coppia Frenante Iniziale può essere più bassa del 30%-50% **Warning:** Initial Braking Torque can be lower of 30%-50%
- Usura Ferodi Massima Totale/Maximum total wear of pads =7mm

MODELLO / MODEL	CODICE / CODE	A	B	C	D _{Max}	E _{Max}	Forza Frenante/Braking Force	Peso
PPB003/ 08	19.16.003.02	8	86	60	55	115	Ft= 3890N (6bar)	2.8kg
PPB003/12.7	19.16.003.03	12.7	90	60	55	115	Ft= 3890N (6bar)	2.9kg
PPB003/25.4	19.16.003.04	25.4	102	60	63	123	Ft= 3890N (6bar)	3.0kg



PPB004/

Pneumatico / Pneumatically Applied



- Pressione di Lavoro/Operating Pressure: **Pl= 6bar** - Volume Max Cilindro/Max Cylinder Volume: **63cm³**
- Coppia Frenante/Braking Torque: **Md= [Ftx(Φ(m)/2-0.024(m))]**
Importante: La Coppia Frenante Iniziale può essere più bassa del 30%-50% **Warning:** Initial Braking Torque can be lower of 30%-50%
- Usura Ferodi Massima Totale/Maximum total wear of pads =7mm

MODELLO / MODEL	CODICE / CODE	A	B	C	D _{Max}	E _{Max}	Forza Frenante/Braking Force	Peso
PPB004/ 08	19.16.004.02	8	86	54	99	153	Ft= 5900N (6bar)	4.1kg
PPB004/12.7	19.16.004.03	12.7	90	54	100	154	Ft= 5900N (6bar)	4.2kg
PPB004/25.4	19.16.004.04	25.4	102	70	107	177	Ft= 5900N (6bar)	4.3kg

