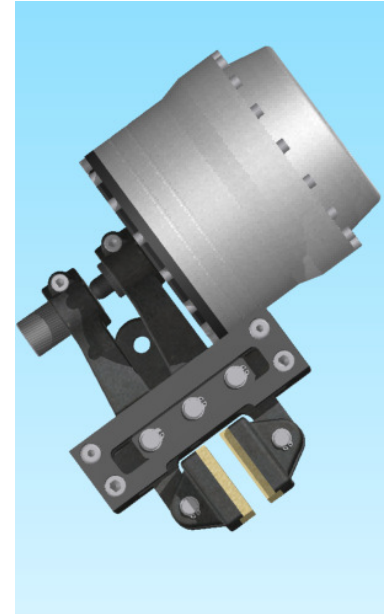
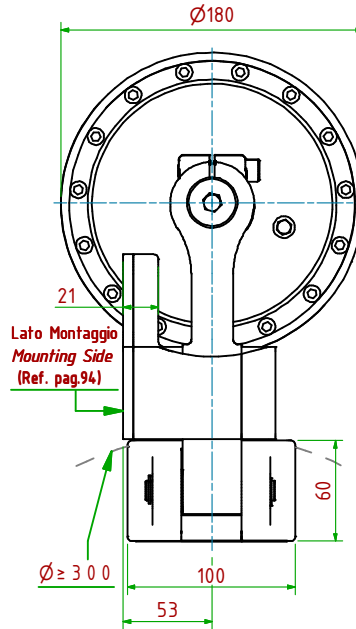
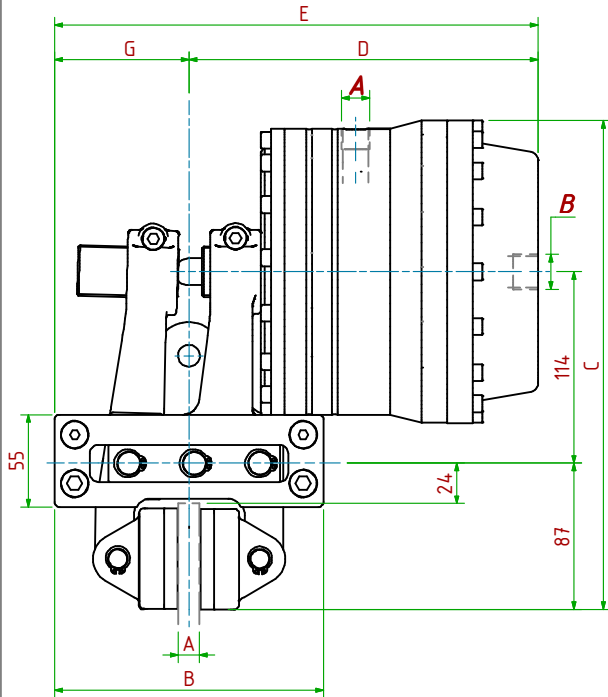


PPH-PN034/□□□

Pneumatico DUO / Pneumatically DUO



Funzionamento Positivo/Pneumatically Applied

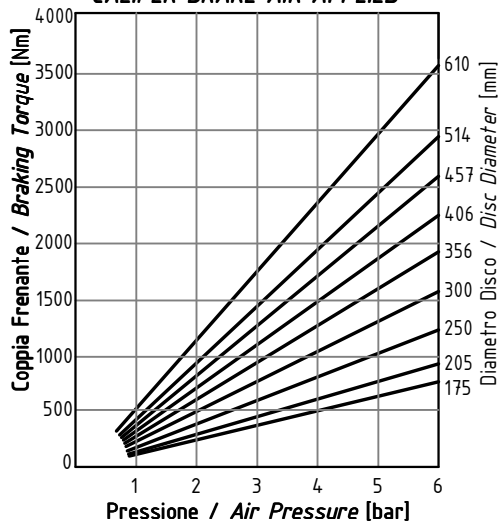
- Pressione di Lavoro/Operating Pressure **Pl= 6bar**
- Alimentazione Cilindro/Pneumatic Cylinder Supply **A: 3/8"Gas**
- Volume Max Cilindro/Max Cylinder Volume **175cm³**
- Coppia Frenante/Braking Torque **Md= [Ft×(Φ(m)/2-0.029(m))]**

Funzionamento Negativo/Pneumatically Released

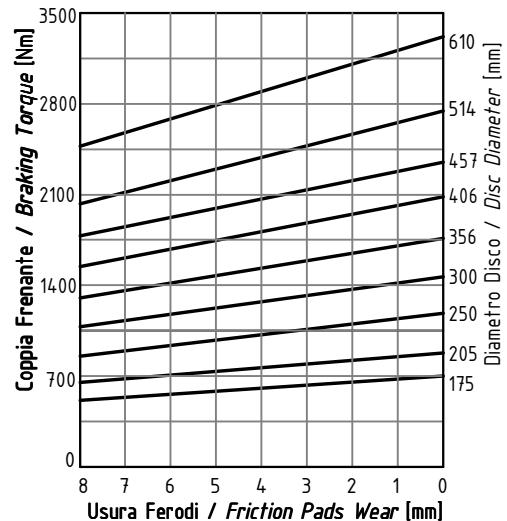
- Pressione di Apertura/Release Pressure **Pa= 6bar**
- Alimentazione Cilindro/Spring Applied Cylinder Supply **B: 1/2"Gas**
- Volume Max Cilindro/Max Cylinder Volume **285cm³**
- Usura Ferodi Massima Totale/Maximum total wear of pads =9mm

MODELLO/MODEL	CODICE/CODE	A	B	C	DMax	EMax	G	Forza Frenante: Positivo-Negativo / Braking Force	Peso
PPH-PN034/12.7	19.56.034.03	12.7	160	291	208	288	80	Ft _{pos} = 12910N (6bar) Ft _{neg} = 12000N(0bar)	18.3 kg
PPH-PN034/25.4	19.56.034.04	25.4	180	291	214	304	90	Ft _{pos} = 12910N (6bar) Ft _{neg} = 12000N(0bar)	18.7 kg

FRENO A PINZA USO POSITIVO
CALIPER BRAKE AIR APPLIED



FRENO A PINZA USO NEGATIVO
CALIPER BRAKE SPRING APPLIED



Coppia Frenante Md

La coppia frenante iniziale può essere dal 30% al 50% in meno rispetto al valore nominale, fino al completo assestamento del ferodo sulla superficie del disco.

Braking Torque Md

The initial braking torque can be from 30% up to 50% less than nominal torque, until the friction pad works correctly on the disc surface.