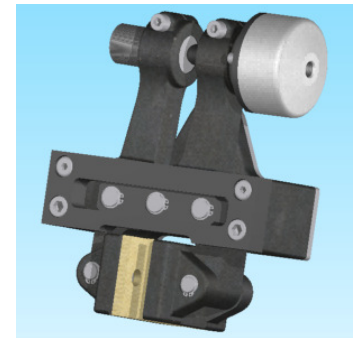
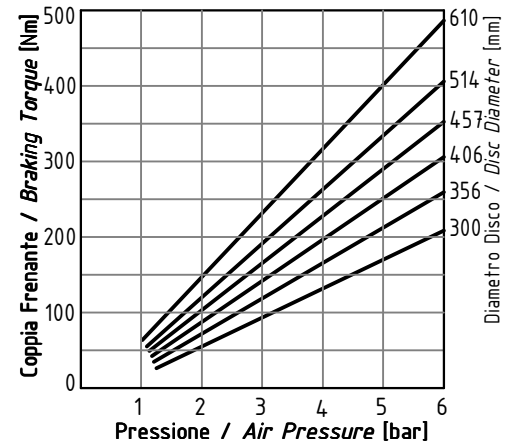
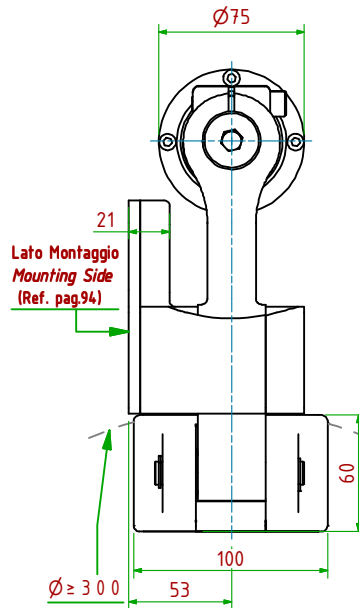
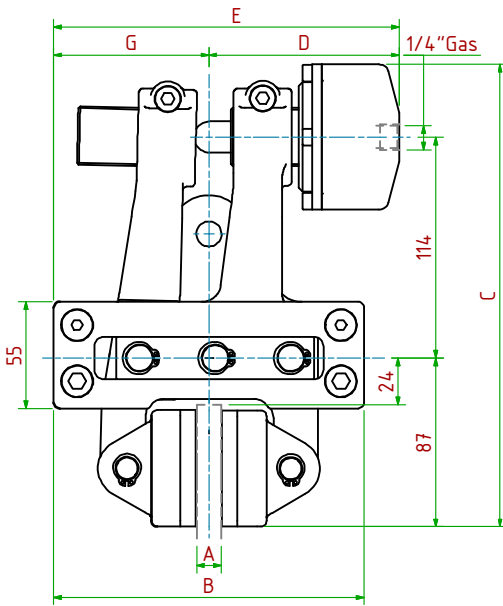


PPH031/

Pneumatico / Pneumatically Applied

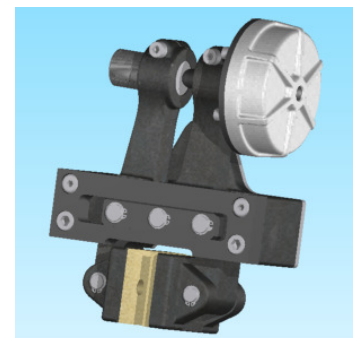
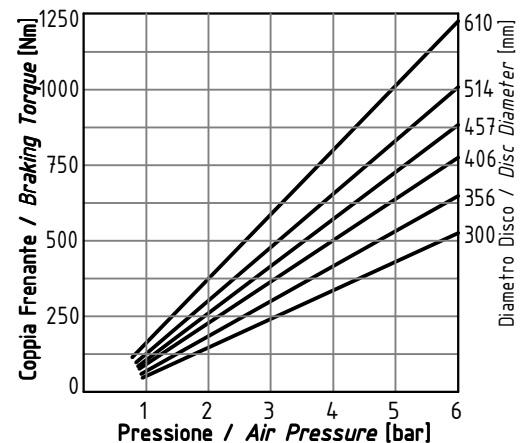
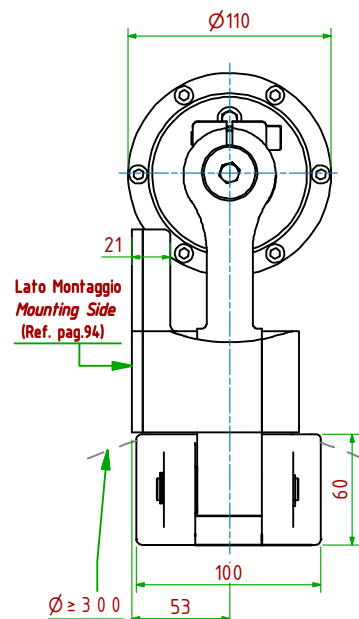
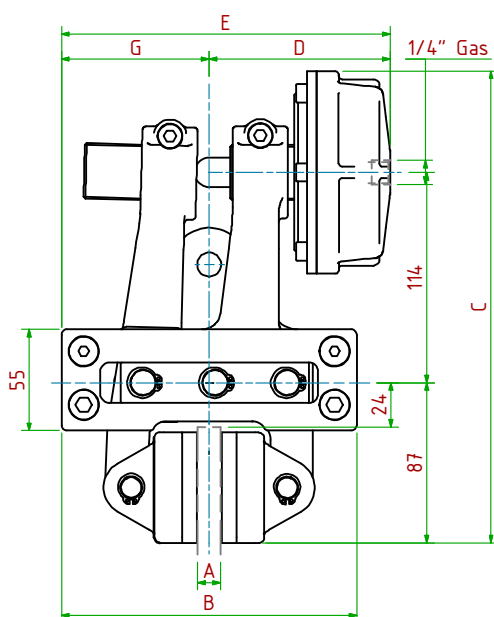


- Pressione di Lavoro/Operating Pressure: **Pl= 6bar** - Volume Max Cilindro/Max Cylinder Volume: **27 cm³**
- Coppia Frenante/Braking Torque: **Md= [Ftx(Φ(m)/2-0.033(m))]**
- Importante:** La Coppia Frenante Iniziale può essere più bassa del 30%-50% **Warning:** Initial Braking Torque can be lower of 30%-50%
- Usura Ferodi Massima Totale/Maximum total wear of pads =9mm

MODELLO/ MODEL	CODICE/ CODE	A	B	C	D _{Max}	E _{Max}	G	Forza Frenante/Braking Force	Peso
PPH031/12.7	19.16.031.03	12.7	180	239	98	178	80	Ft= 1800N (6bar)	10.5 kg
PPH031/25.4	19.16.031.04	25.4	180	239	103	193	90	Ft= 1800N (6bar)	10.9 kg

PPH032/

Pneumatico / Pneumatically Applied



- Pressione di Lavoro/Operating Pressure: **Pl= 6bar** - Volume Max Cilindro/Max Cylinder Volume: **63 cm³**
- Coppia Frenante/Braking Torque: **Md= [Ftx(Φ(m)/2-0.033(m))]**
- Importante:** La Coppia Frenante Iniziale può essere più bassa del 30%-50% **Warning:** Initial Braking Torque can be lower of 30%-50%
- Usura Ferodi Massima Totale/Maximum total wear of pads =9mm

MODELLO/ MODEL	CODICE/ CODE	A	B	C	D _{Max}	E _{Max}	G	Forza Frenante/Braking Force	Peso
PPH032/12.7	19.16.032.03	12.7	180	256	98	178	80	Ft= 4500N (6bar)	11.2 kg
PPH032/25.4	19.16.032.04	25.4	180	256	103	193	90	Ft= 4500N (6bar)	11.6 kg