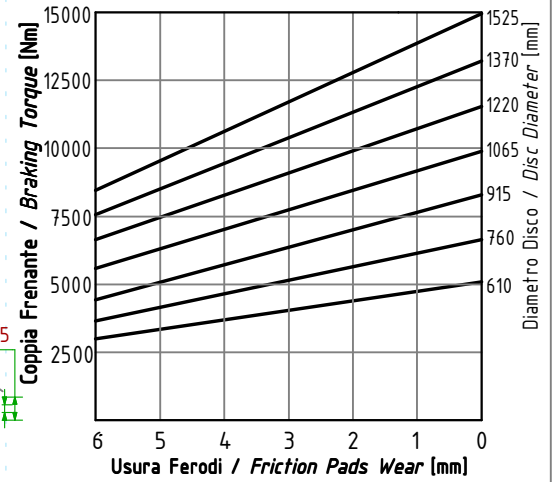
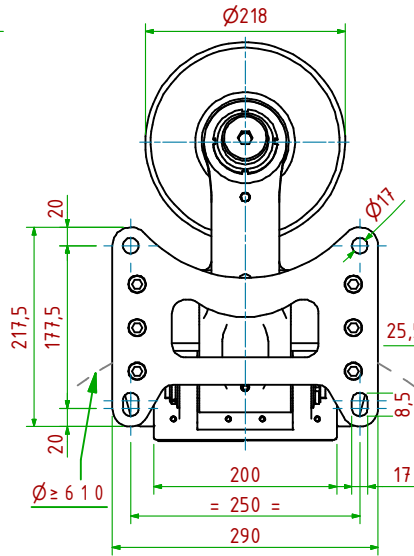
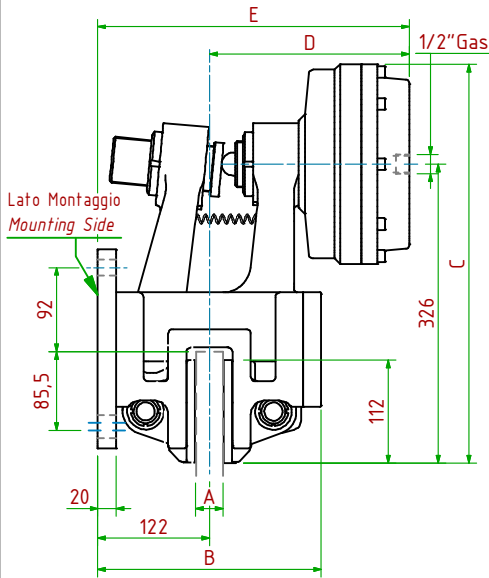


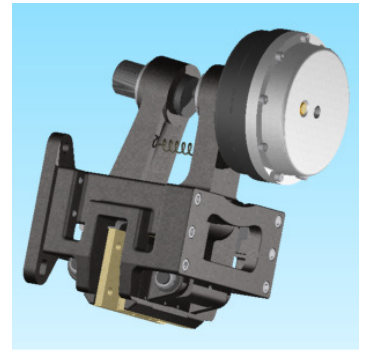
PPTP-N640/ □ □ □

Pneumatico Negativo / Pneumatically Released



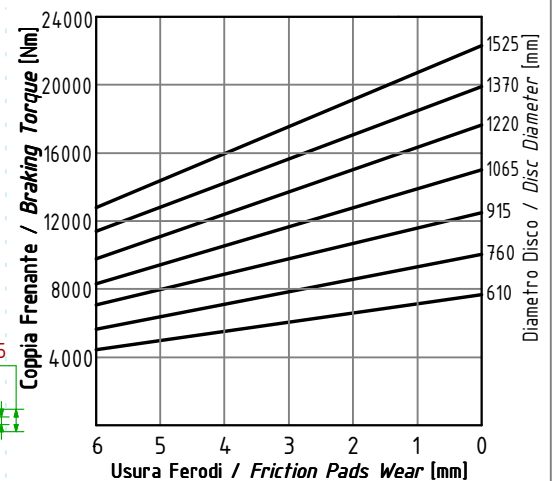
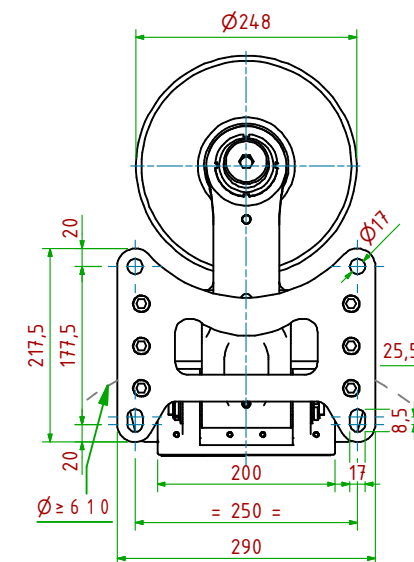
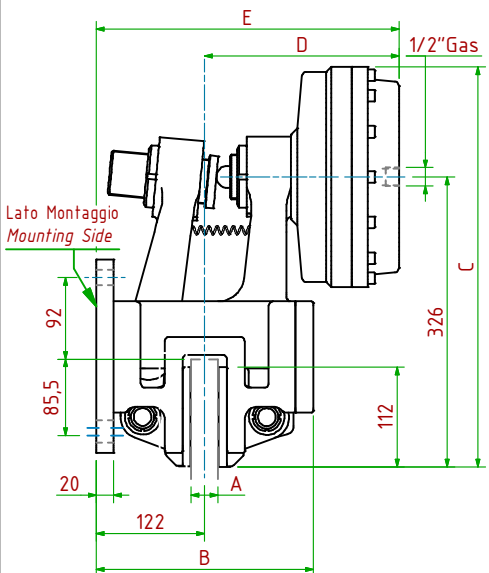
- Pressione di Apertura/Release Pressure: **Pa= 6bar** - Volume Max Cilindro/Max Cylinder Volume: **530cm³**
- Coppia Frenante/Braking Torque: **Md= [Ftx(Φ(m))/2-0.065(m)]**
- Importante:** La Coppia Frenante Iniziale può essere più bassa del 30%-50% **Warning:** Initial Braking Torque can be lower of 30%-50%
- Usura Ferodi Massima Totale/Maximum total wear of pads =12mm

MODELLO/ MODEL	CODICE/ CODE	A	B	C	D _{Max}	E _{Max}	Forza Frenante/Braking Force	Peso
PPTP-N640/25.4	19.36.640.04	25.4	244	435	219	341	Ft= 21200N (0bar)	68.2kg
PPTP-N640/ 30	19.36.640.05	30	244	435	219	341	Ft= 21200N (0bar)	68.2kg
PPTP-N640/ 40	19.36.640.06	40	244	435	224	346	Ft= 21200N (0bar)	68.2kg



PPTP-N660/ □ □ □

Pneumatico Negativo / Pneumatically Released



- Pressione di Apertura/Release Pressure: **Pa= 6bar** - Volume Max Cilindro/Max Cylinder Volume: **700cm³**
- Coppia Frenante/Braking Torque: **Md= [Ftx(Φ(m))/2-0.065(m)]**
- Importante:** La Coppia Frenante Iniziale può essere più bassa del 30%-50% **Warning:** Initial Braking Torque can be lower of 30%-50%
- Usura Ferodi Massima Totale/Maximum total wear of pads =12mm

MODELLO/ MODEL	CODICE/ CODE	A	B	C	D _{Max}	E _{Max}	Forza Frenante/Braking Force	Peso
PPTP-N660/25.4	19.36.660.04	25.4	244	450	219	341	Ft= 32000N (0bar)	72.7kg
PPTP-N660/ 30	19.36.660.05	30	244	450	219	341	Ft= 32000N (0bar)	72.7kg
PPTP-M660/ 40	19.36.660.06	40	244	450	224	346	Ft= 32000N (0bar)	72.7kg

