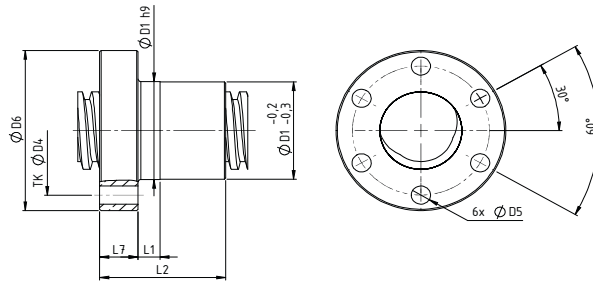
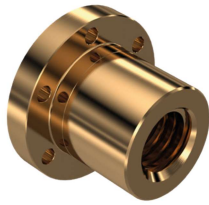


Trapezgewindetriebe TGT

Trapezoidal Screw Drives

Einbaufertige Flanschmuttern TGM-EFM

Ready-to-install Flanged Nuts



Technische Daten/Abmessungen *Technical data/dimensions*

Typ <i>type</i>	Abmessungen <i>dimensions</i> [mm]							Masse <i>mass</i> [kg]	Flächentrageanteil <i>bearing surface</i> [mm ²]
	D_1 h_9	D_4	D_6	D_5	L_1	L_2	L_7		
EFM-Tr12x3	24	32	40	6	10	28	12	0,11	327
EFM-Tr12x6 P3	24	32	40	6	10	28	12	0,11	327
EFM-Tr14x3	28	38	48	6	8	35	12	0,2	492
EFM-Tr14x4	28	38	48	6	8	35	12	0,2	466
EFM-Tr16x2	28	38	48	6	8	44	12	0,25	758
EFM-Tr16x4	28	38	48	6	8	44	12	0,25	691
EFM-Tr16x8 P4	28	38	48	6	8	44	12	0,25	691
EFM-Tr18x4	28	38	48	6	8	44	12	0,25	790
EFM-Tr18x6	28	38	48	6	8	44	12	0,25	723
EFM-Tr18x8 P4	28	38	48	6	8	44	12	0,25	790
EFM-Tr20x2	32	45	55	7	8	44	12	0,30	960
EFM-Tr20x4	32	45	55	7	8	44	12	0,30	889
EFM-Tr20x6	32	45	55	7	8	44	12	0,30	819
EFM-Tr20x8 P4	32	45	55	7	8	44	12	0,30	889
EFM-Tr20x16 P4	32	45	55	7	8	44	12	0,30	930
EFM-Tr22x5	32	45	55	7	8	44	12	0,30	951
EFM-Tr24x5	32	45	55	7	8	44	12	0,30	1049
EFM-Tr24x10 P5	32	45	55	7	8	44	12	0,30	1049
EFM-Tr26x5	38	50	62	7	8	46	14	0,40	1202
EFM-Tr26x6	38	50	62	7	8	46	14	0,40	1162
EFM-Tr28x5	38	50	62	7	8	46	14	0,40	1304
EFM-Tr30x3	38	50	62	7	8	46	14	0,40	1491
EFM-Tr30x6	38	50	62	7	8	46	14	0,40	1365
EFM-Tr30x12 P6	38	50	62	7	8	46	14	0,40	1365
EFM-Tr32x6	45	58	70	7	10	54	16	0,60	1739
EFM-Tr36x3	45	58	70	7	10	59	16	0,60	2333
EFM-Tr36x6	45	58	70	7	10	59	16	0,60	2173
EFM-Tr36x12 P6	45	58	70	7	10	59	16	0,60	2173
EFM-Tr40x7	63	78	95	9	10	73	16	1,70	2984
EFM-Tr40x8	63	78	95	9	10	73	16	1,70	2922
EFM-Tr40x14 P7	63	78	95	9	10	73	16	1,70	2984
EFM-Tr44x7	63	78	95	9	10	73	16	1,70	3311
EFM-Tr50x8	72	90	110	11	10	97	18	2,60	5034
EFM-Tr55x9	72	90	110	11	10	97	18	2,70	5497
EFM-Tr60x9	85	105	125	11	10	99	20	3,70	6172
EFM-Tr60x12	85	105	125	11	10	99	20	3,70	5910
EFM-Tr60x18 P9	85	105	125	11	10	99	20	3,70	6172
EFM-Tr70x10	95	140	180	17	16	100	30	7,80	7267
EFM-Tr70x12	95	140	180	17	16	100	30	7,80	7080
EFM-Tr80x10	105	150	190	17	16	110	30	8,90	9269
EFM-Tr90x16	120	165	210	25	20	130	35	14,3	11776
EFM-Tr100x10	130	185	240	25	20	130	35	16,0	13979
EFM-Tr100x16	130	185	240	25	20	130	35	16,0	13212
EFM-Tr120x14	160	230	300	28	20	160	40	32,0	20355
EFM-Tr120x16	160	230	300	28	20	160	40	32,0	20043

Werkstoff *material*: 2.1090 (CuSn7Zn4Pb7; RG7)