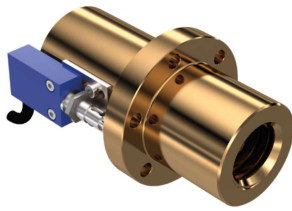
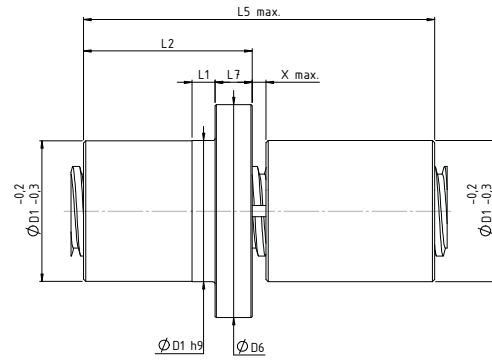
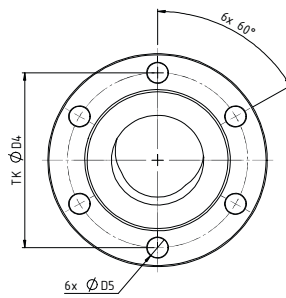


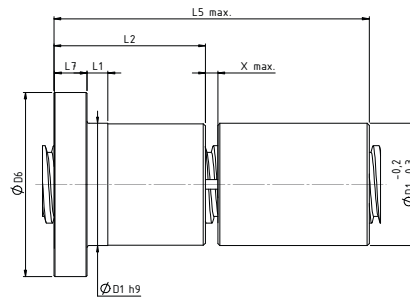
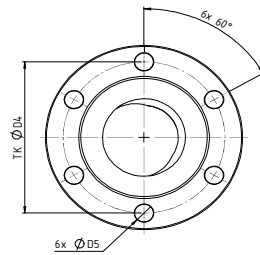
Sicherheitsfangmuttern TGM-SFx/SZx Safety Nuts



Beispiel Example
SF4



Beispiel Example
SZ3



Technische Daten/Abmessungen *Technical data/dimensions*

Typ type	Abmessungen dimensions [mm]										Masse kurz mass short [kg]	Masse lang mass long [kg]	Flächentrageanteil bearing surface [mm ²]
	D ₁ h ₉	D ₄	D ₅	D ₆	L ₁	L ₂	L ₅ kurz short	L ₅ lang long	L ₇	X			
EFM-SFx/SZx Tr12x3	24	32	6	40	10	28	50	60	12	4	0,17	0,2	327
EFM-SFx/SZx Tr12x6 P3	24	32	6	40	10	28	50	60	12	4	0,17	0,2	327
EFM-SFx/SZx T14x4	28	38	6	48	8	35	61	74	12	4	0,35	0,41	465
EFM-SFx/SZx Tr16x4	28	38	6	48	8	44	76	92	12	4	0,37	0,43	691
EFM-SFx/SZx Tr16x8 P4	28	38	6	48	8	44	76	92	12	4	0,37	0,43	691
EFM-SFx/SZx Tr18x4	28	38	6	48	8	44	76	92	12	4	0,37	0,43	790
EFM-SFx/SZx Tr18x8 P4	28	38	6	48	8	44	76	92	12	4	0,37	0,43	790
EFM-SFx/SZx Tr20x4	32	45	7	55	8	44	76	92	12	4	0,44	0,51	889
EFM-SFx/SZx Tr20x8 P4	32	45	7	55	8	44	76	92	12	4	0,44	0,51	889
EFM-SFx/SZx Tr20x16 P4	32	45	7	55	8	44	76	92	12	4	0,44	0,51	889
EFM-SFx/SZx Tr24x5	32	45	7	55	8	44	77	93	12	5	0,45	0,52	1049
EFM-SFx/SZx Tr24x10 P5	32	45	7	55	8	44	77	93	12	5	0,45	0,52	1049
EFM-SFx/SZx Tr30x6	38	50	7	62	8	46	81	97	14	5	0,55	0,63	1365
EFM-SFx/SZx Tr30x12 P6	38	50	7	62	8	46	81	97	14	5	0,55	0,63	1365
EFM-SFx/SZx Tr36x6	45	58	7	70	10	59	102	123	16	5	0,85	0,99	2173
EFM-SFx/SZx Tr36x12 P6	45	58	7	70	10	59	102	123	16	5	0,85	0,99	2173
EFM-SFx/SZx Tr40x7	63	78	9	95	10	73	124	152	16	6	2,53	3,04	2984
EFM-SFx/SZx Tr40x14 P7	63	78	9	95	10	73	124	152	16	6	2,53	3,04	2984
EFM-SFx/SZx Tr50x8	72	90	11	110	10	97	163	200	18	6	3,89	4,68	5034
EFM-SFx/SZx Tr55x9	72	90	11	110	10	97	164	201	18	7	3,8	4,5	5497
EFM-SFx/SZx Tr60x9	85	105	11	125	10	99	168	205	20	7	5,5	6,57	6172
EFM-SFx/SZx Tr60x12	85	105	11	125	10	99	168	205	20	7	5,5	6,57	5910
EFM-SFx/SZx Tr70x10	95	140	17	180	16	100	170	208	30	8	9,88	11,15	7267
EFM-SFx/SZx Tr70x12	95	140	17	180	16	100	170	208	30	8	9,88	11,15	7080
EFM-SFx/SZx Tr80x10	105	150	17	190	16	110	188	228	30	8	11,54	13,05	9269
EFM-SFx/SZx Tr90x16	120	165	25	210	20	130	188	228	35	8	13,80	15,25	11700
EFM-SFx/SZx Tr100x10	130	185	25	240	20	130	218	268	35	8	20,4	23,16	13979
EFM-SFx/SZx Tr100x16	130	185	25	240	20	130	218	268	35	8	20,4	23,16	13100
EFM-SFx/SZx Tr120x14	160	230	28	300	20	160	271	331	40	11	40,97	46,35	20355
EFM-SFx/SZx Tr120x16	160	230	28	300	20	160	271	331	40	11	40,97	46,35	20250

Weitere mögliche Ausführungen siehe Bestellcode *For other possible versions see order code*

Werkstoff *material*: 2.1090 (CuSn7Zn4Pb7; RG7)