

6.1.1 Fastening strips / fastening elements

Fastening strips and fastening elements (Figures 6.1 and 6.3) are available for Linear Axis of the series AXC, AXDL and AXF.

The distance between the fastening points should be selected depending on the load and the required straightness and the rigidity.

The dimensions and type codes, including the ID - Numbers are shown for Linear Axis of the series AXC and AXDL in Figure 6.2 and Table 6.1 and for Linear Axis of the AXF series in Figure 6.4 and Table 6.2. For Linear Axis of the AXF series, the dimensions J and F (Chapter 5.3.1.2 and 5.3.2.2) as well as the number of fastening elements must be specified.

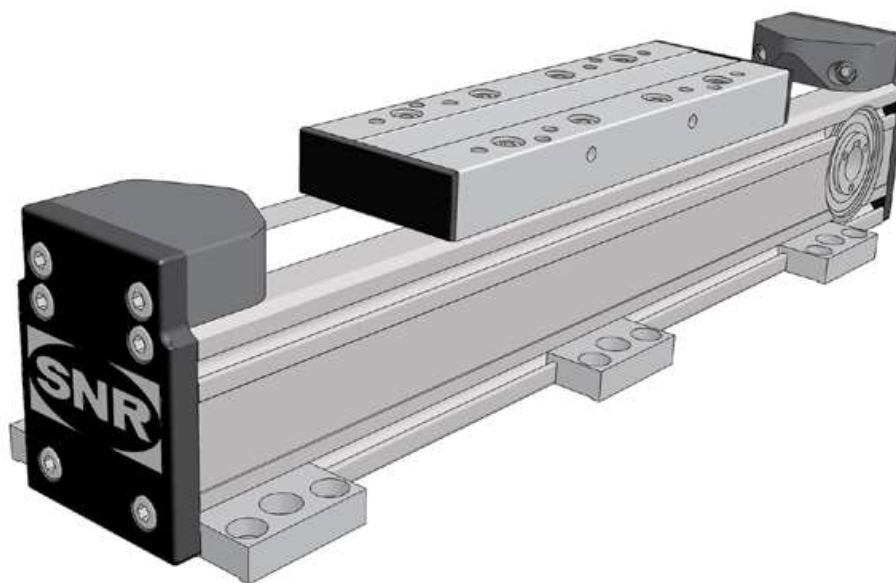


Figure 6.1 — Linear Axis AXC fastening strips

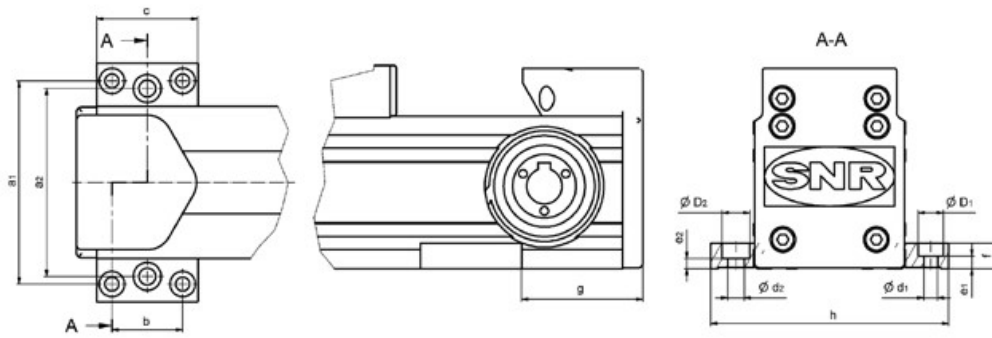


Figure 6.2 — Dimensions fastening strips AXC / AXDL

Table 6.1 — Fastening strips AXC / AXDL

Type	Designation	ID number	a1 [mm]	a2 [mm]	b [mm]	c [mm]	d1 [mm]	D1 [mm]	e1 [mm]	d2 [mm]	D2 [mm]	e2 [mm]	f [mm]	g ¹ [mm]	h [mm]
AXC40	AX-AC-FST-40x13-2	108663	55		28	40	5,5	10	7,0				13	38 ²	66
AXC60 ³	AX-AC-FST-40x10-3	108579	80	74	28	40	5,5	10	5,0	6,6	11	4	10	48	94
AXC80	AX-AC-FST-70x20-2	108075	94		50	70	6,6	11	14,0				20	76	108
AXC100Z_B	AX-AC-FST-78x22-2	571025	116		60	78	9,0	15	11,5				22	108	140
AXC100Z_C	AX-AC-FST-80x22-2	104481	120		40	80	9,0	15	13,0				22	108	140
AXC100Z_L	AX-AC-FST-120x22-3	111181	120	120	80	120	9,0	15	13,0	9	15	13	22	108	140
AXC100_D	AX-AC-FST-68x9-2	465044	118		50	68	6,5	11	3,5				9	88	128
AXC120 ⁴	AX-AC-FST-78x22-2	571025	136		60	78	9,0	15	11,5				22	108	160
	AX-AC-FST-80x22-2	104481	140		40	80	9,0	15	13,0				22	108	160
	AX-AC-FST-120x22-3	111181	140	140	80	120	9,0	15	13,0	9	15	13	22	108	160
AXDL110	AX-AC-FST-47x7-2	465040	126		30	47	5,5	9	3,5				7	69	140
AXDL160	AX-AC-FST-68x9-2	465044	174		50	68	6,5	11	3,5				9	88	188
AXDL240 ⁴	AX-AC-FST-78x22-2	571025	256		60	78	9,0	15	11,5				22	108	280
	AX-AC-FST-80x22-2	104481	260		40	80	9,0	15	13,0				22	108	280
	AX-AC-FST-120x22-3	111181	260	260	80	120	9,0	15	13,0	9	15	13	22	108	280

¹ For toothed belt axis measure k2 of drive adapter or gearbox Chapter 6.2.4.1, Table 6.23, but \geq dimension a of the machining on the drive-side Chapter 6.2.1, Table 6.15

² For toothed belt axis with assembled coupling

³ Also suitable for standard machine construction profiles spacing 20

⁴ Also suitable for standard machine construction profiles spacing 40

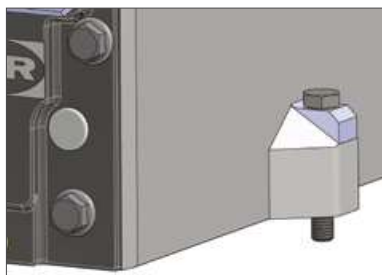


Figure 6.3 — Linear Axis AXF with fastening element

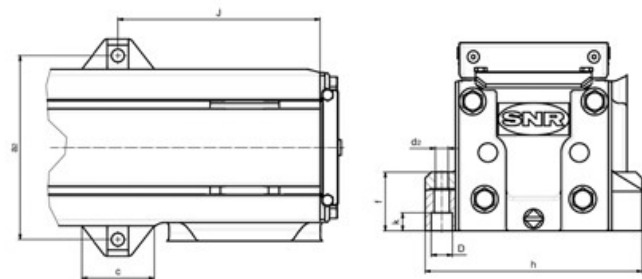


Figure 6.4 — Dimensions fastening element AXF

Table 6.2 — Fastening element AXF

Type	Designation	ID number	a2 [mm]	c [mm]	D [mm]	d2 [mm]	f [mm]	J _{min} [mm]	h [mm]	k [mm]
AXF100Z								134 ¹		
AXF100S AXF100T AXF100G	AX-AC-FEL-48x39-1	371439	122	48	12 H8	8,5	39	30	144	12

¹ Drive side, see dimension Chapter 5.3.1.2