

CREMAGLIERE TONDE SERIE 240

ROUND RACKS SERIES 240

Q8 - C45
Qualità - Quality: 8
Materiale: rettificato in h7 - Material: ground in h7 C45
Superficie: denti finiti d'utensile

Surface: milled teeth

Trattamento termico: non incluso

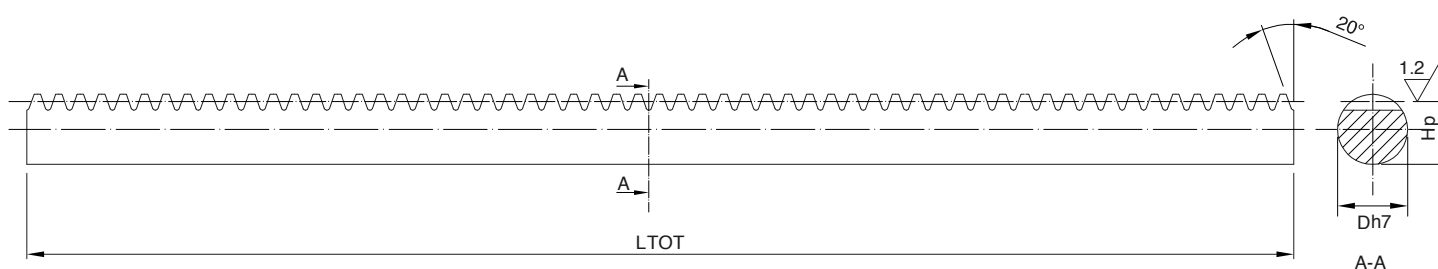
Heat-treatment: not included

R= 700 N/mm² (resistenza carico a rottura)

 R= 700 N/mm² (tensile strength)

Dentatura Dritta SERIE 240

Straight tooth system SERIES 240


 In caso di prodotti personalizzati a disegno, invia la tua richiesta a - In case you need customized products, please send your request to: info@gambinimeccanica.it

CODICE ITEM CODE	M	LTOT	D	Hp	PESO kg
1RR18S010050	1	500	10	9	0,28
1RR18S010100	1	1000	10	9	0,56
1RR18S020050	2	500	20	18	1,14
1RR18S020100	2	1000	20	18	2,27
1RR18S020200	2	2000	20	18	4,54
1RR18S030050	3	500	30	27	2,6
1RR18S030100	3	1000	30	27	5,1
1RR18S030200	3	2000	30	27	10,2
1RR18S030300	3	3000	30	27	15,3
1RR18S040050	4	500	40	36	4,6
1RR18S040100	4	1000	40	36	9,1
1RR18S040200	4	2000	40	36	18,2
1RR18S040300	4	3000	40	36	27,3
1RR18S050050	5	500	50	45	7
1RR18S050100	5	1000	50	45	14
1RR18S050200	5	2000	50	45	28
1RR18S050300	5	3000	50	45	42
1RR18S060050	6	500	60	54	10,25
1RR18S060100	6	1000	60	54	20,5
1RR18S060200	6	2000	60	54	41
1RR18S060300	6	3000	60	54	61,5