

Dentatura Dritta SERIE 435

Straight tooth system SERIES 435

Q6 - C45

Mozzo Lungo Long Hub

Qualità - Quality: **6e24**

Materiale - Material: **C45**

Angolo di pressione - Pressure angle: **20°**

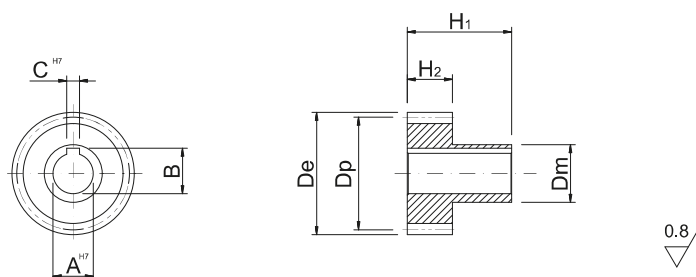
Superficie: **rettificata** - Surface: ground

Trattamento termico: **denti temprati ad induzione 55-58 HRC**

Heat-treatment: induction-hardened teeth 55-58 HRC

R= 700 N/mm² (resistenza carico a rottura)

R= 700 N/mm² (tensile strength)



In caso di prodotti personalizzati a disegno, invia la tua richiesta a - In case you need customized products, please send your request to: info@gambinimeccanica.it

CODICE ITEM CODE	M	Z	De	Dp	CH7	B	AH7	H2	H1	Dmh8
1SG16S015016L	1,5	16	27	24	4	11,5	10	28	65	20
1SG16S015018L	1,5	18	30	27	5	17,3	15	28	65	22
1SG16S015020L	1,5	20	33	30	5	17,3	15	28	65	25
1SG16S015024L	1,5	24	39	36	6	22,8	20	28	65	32
1SG16S015030L	1,5	30	48	45	8	28,3	25	28	65	40
1SG16S015040L	1,5	40	63	60	12	43,3	40	28	65	55
1SG16S020016L	2	16	36	32	5	17,3	15	28	65	25
1SG16S020018L	2	18	40	36	5	17,3	15	28	65	30
1SG16S020020L	2	20	44	40	6	22,8	20	28	65	30
1SG16S020022L	2	22	48	44	8	28,3	25	28	65	36
1SG16S020024L	2	24	52	48	8	28,3	25	28	65	36
1SG16S020030L	2	30	64	60	8	28,3	25	28	65	36
1SG16S020040L	2	40	84	80	12	43,3	40	28	65	62
1SG16S030020L	3	20	66	60	6	22,8	20	28	65	30
1SG16S030022L	3	22	72	66	8	28,3	25	28	65	36
1SG16S030024L	3	24	78	72	8	28,3	25	28	65	36
1SG16S030040L	3	40	126	120	12	43,3	40	28	65	62
1SG16S031020L	3,183	20	70,028	63,662	6	22,8	20	28	65	30
1SG16S031022L	3,183	22	76,394	70,028	8	28,3	25	28	65	36
1SG16S031024L	3,183	24	82,76	76,394	8	28,3	25	28	65	36
1SG16S031030L	3,183	30	101,859	95,493	8	28,3	25	28	65	36
1SG16S040020L	4	20	88	80	10	38,3	35	40	75	55
1SG16S040025L	4	25	108	100	10	38,3	35	40	75	55
1SG16S040030L	4	30	128	120	10	38,3	35	40	75	55
1SG16S040032L	4	32	136	128	10	38,3	35	40	75	55
1SG16S050020L	5	20	110	100	14	48,8	45	50	75	68
1SG16S050024L	5	24	130	120	14	48,8	45	50	75	68
1SG16S050025L	5	25	135	125	14	48,8	45	50	75	68
1SG16S050030L	5	30	160	150	14	48,8	45	50	75	68
1SG16S060020L	6	20	132	120	16	59,3	55	60	120	80
1SG16S060021L	6	21	138	126	16	59,3	55	60	120	80
1SG16S060024L	6	24	156	144	16	59,3	55	60	120	80
1SG16S060025L	6	25	162	150	16	59,3	55	60	120	80
1SG16S060030L	6	30	192	180	16	59,3	55	60	120	80
1SG16S080020L	8	20	176	160	20	79,9	75	80	145	110
1SG16S100020L	10	20	220	200	22	90,4	85	100	165	125