


PIGNONI DENTI ELICOIDALI CON ALBERO SERIE 500
Q6 - 20MnCr5

HELICAL PINION SHAFTS SERIES 500

Qualità - Quality: 6e24 / Materiale - Material: 20MnCr5
Angolo di pressione - Pressure angle: 20°
Denti elicoidali: 19° 31' 42" sx

Helical tooth system: 19° 31' 42" left-hand

Superficie: rettificata - Surface: ground
Trattamento termico: cementazione 60 HRC

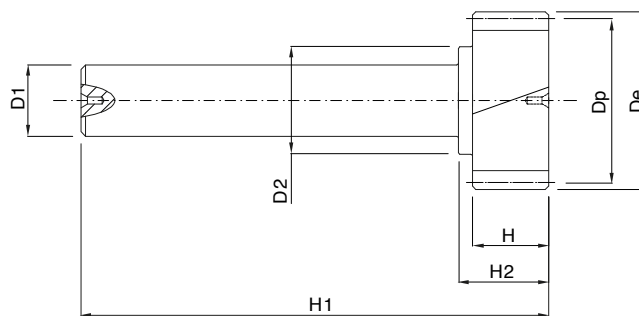
Heat-treatment: case-hardening 60 HRC

R= 1200 N/mm² (resistenza carico a rottura)

 R= 1200 N/mm² (tensile strength)

Dentatura Elicoidale SERIE 500

Helical tooth system SERIES 500


 In caso di prodotti personalizzati a disegno, invia la tua richiesta a - In case you need customized products, please send your request to: info@gambinimeccanica.it

CODICE ITEM CODE	M	Z	Dp	De	H	D1	D2	H1	H2
1HP36L015020A	1,5	20	31,831	34,831	20	20	26	100,25	26
1HP36L020015A	2	15	33,500	37,500	25	20	24	105	31
1HP36L020020A	2	20	42,441	46,441	25	25	35	148	34
1HP36L020030A	2	30	63,662	67,662	25	25	38	148	34
1HP36L030020A	3	20	63,662	69,662	30	25	31	150	36,5
1HP36L020030B	2	30	63,662	67,662	25	28	42	180	38,5
1HP36L030020B	3	20	63,662	69,662	30	28	42	183	41
1HP36L040015A	4	15	63,662	71,662	40	28	36	188	46
1HP36L020030C	2	30	63,662	67,662	25	36	48	203	32,5
1HP36L030020C	3	20	63,662	69,662	30	36	48	208	37,5
1HP36L040015B	4	15	63,662	71,662	40	36	48	213	42,5
1HP36L040015C	4	15	63,662	71,662	40	48	52	240	43,5
1HP36L040030A	4	30	127,324	135,324	40	48	57	240	43,5
1HP36L050012A	5	12	68,000	78,000	50	48	53	250	53,5
1HP36L060013A	6	13	88,761	100,761	60	48	57	260	63,5
1HP36L050015A	5	15	84,578	94,578	50	60	70	275	55
1HP36L060013B	6	13	88,761	100,761	60	60	70	285	65
1HP36L060013C	6	13	88,761	100,761	60	60	70	285	65
1HP36L060015A	6	15	101,493	113,493	60	60	70	285	65