



Dentatura Elicoidale SERIE 75H Helical tooth system SERIES 75H

Q8 - 42CrMo4

Qualità - Quality: **8** / Materiale - Material: **42CrMo4**

Trattamento termico: non incluso

Denti elicoidali: 19° 31' 42" dx

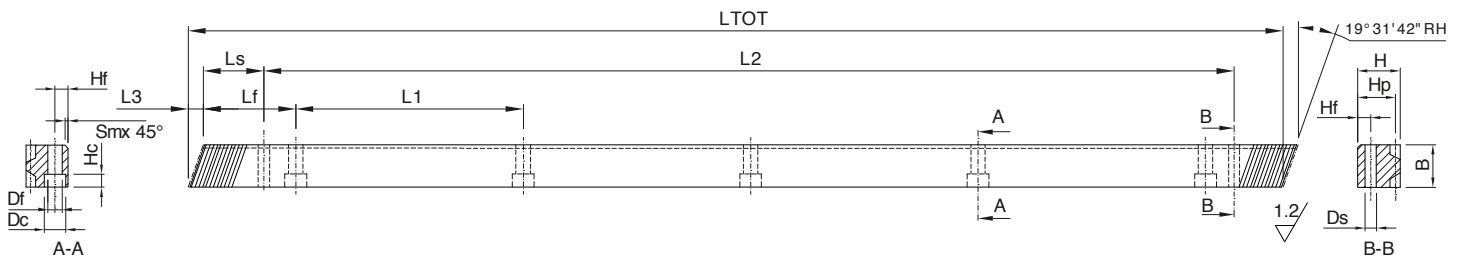
Heat-treatment: not included

Helical tooth system: 19° 31' 42" right-hand

R= 900 N/mm² (resistenza carico a rottura)

Superficie: fresata - Surface: milled

R= 900 N/mm² (tensile strength)



In caso di prodotti personalizzati a disegno, invia la tua richiesta a - In case you need customized products, please send your request to: info@gambinimeccanica.it

CODICE ITEM CODE	M	LTOT	L3	Lf	L1	Ls	B	H	Hf	Ds	Sm	Df	Dc	Hc	Hp	Z	L2	N° fori holes	PESO kg
1HR08R020050H	2	500	8,512	62,5	125	31,71	24	24	8	5,7	2	7	11	7	22	75	436,58	4	2,01
1HR08R020100H	2	1000	8,512	62,5	125	31,71	24	24	8	5,7	2	7	11	7	22	150	936,58	8	4,03
1HR08R030050H	3	500	10,286	62,5	125	34,99	29	29	9	7,7	2	10	15	9	26	50	430,02	4	2,82
1HR08R030100H	3	1000	10,286	62,5	125	34,99	29	29	9	7,7	2	10	15	9	26	100	930,02	8	5,66
1HR08R040100H	4	1000	13,832	62,5	125	33,3	39	39	12	7,7	3	10	15	9	35	75	933,40	8	10,37
1HR08R050050H	5	500	17,379	62,5	125	37,5	49	39	12	11,7	3	14	20	13	34	30	425,00	4	6,09
1HR08R050100H	5	1000	17,379	62,5	125	37,5	49	39	12	11,7	3	14	20	13	34	60	925,00	8	12,27