

perma STAR VARIO /
perma STAR CONTROL
max. 5 m*



Art. No. 109420

perma NOVA
max. 2 m*



perma FLEX
perma FLEX PLUS
max. 2 m*

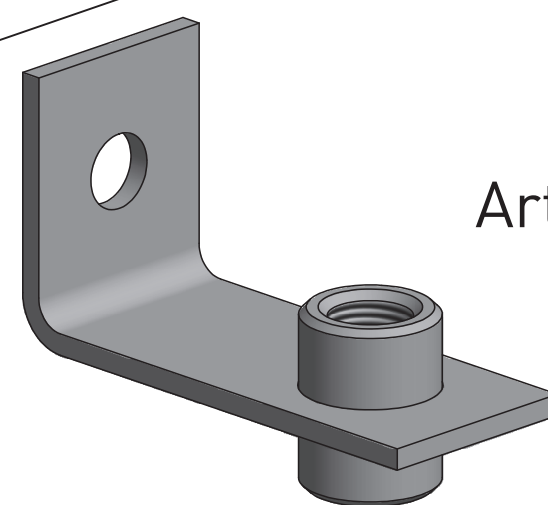


Art. No. 101427

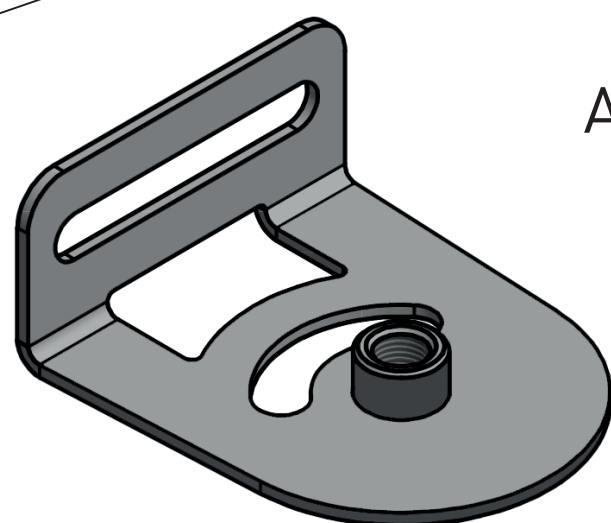
perma FUTURA
perma FUTURA PLUS
max. 1 m*



perma CLASSIC
max. 1 m*

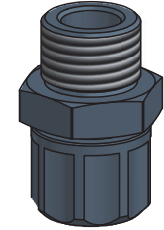


Art. No. 109685

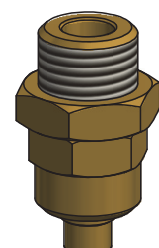


Art. No. 109663

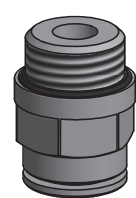
< +80 °C



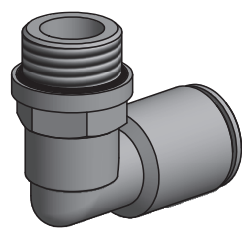
Art. No. 101391



Art. No. 104822



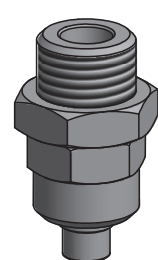
Art. No. 101496



Art. No. 101497



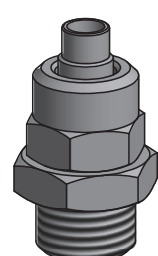
Art. No. 101393



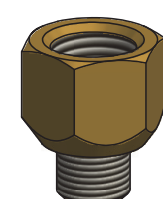
Art. No. 104867



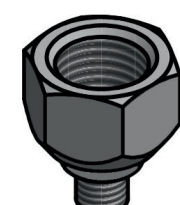
Art. No. 101394



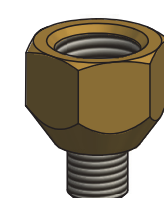
Art. No. 104867



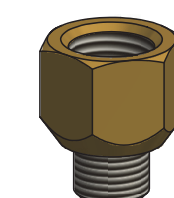
Art. No. 104833



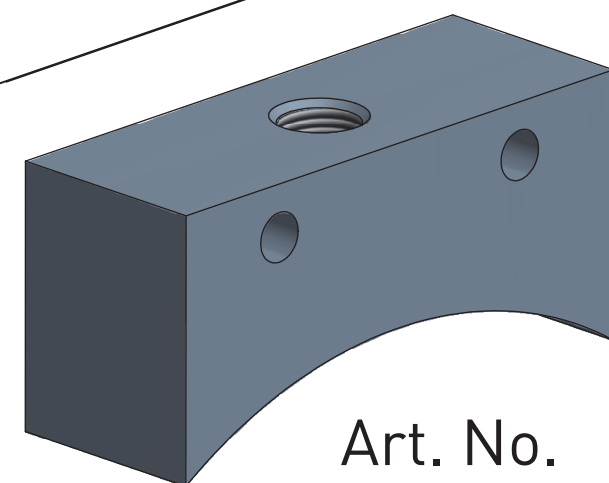
Art. No. 104876



Art. No. 104838



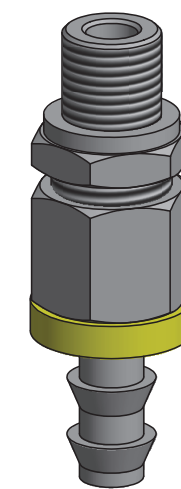
Art. No. 104840



Art. No. 101444

< +100 °C

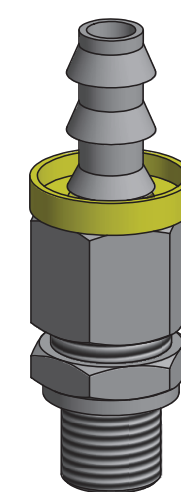
Art. No. 101554



Art. No. 101555

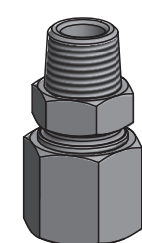


Art. No. 101554



< +260 °C

Art. No. 104868

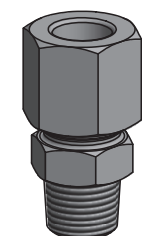


500 mm
Art. No. 113864

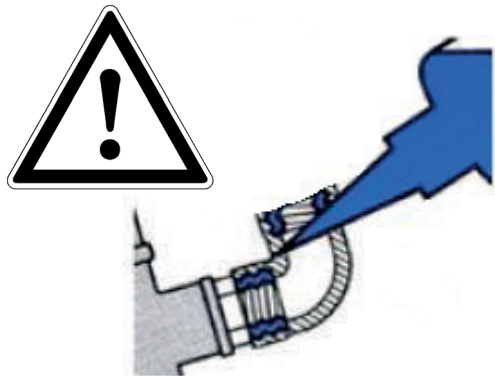
1000 mm
Art. No. 101549

1500 mm
Art. No. 101550

Art. No. 104868



All metal to metal connections must
be glued together with Loctite® 243™
[Art. No. 110278].



* depending on lubricant and ambient temperature

Scale:	Date:	Material:	Description:
Size: A1	Revision / drawn: B / sbr	Part No.	



Support flanges

- 101427 Support flange FLEX G1/4 male x G1/4 female (brass / plastic)
- 109420 Support flange STAR G1/4 male x G1/4 female (brass / plastic)

Mounting Brackets

- 109685 Mounting Bracket CLASSIC, FUTURA, FLEX, NOVA 1-point G1/4 female (stainless steel)
- 109663 Mounting Bracket STAR Standard Duty 1-point G1/4 female (stainless steel)

Tube up to +80 °C

- 101393 Tube up to +80 °C oØ 8 mm x iØ 6 mm (PA)
- 101391 Tube connector G1/4 male for tube oØ 8 mm (alu / plastic)
- 104822 Tube connector G1/4 male for tube oØ 8 mm (brass)
- 101496 Tube connector G1/4 male for tube oØ 8 mm straight (brass nickel-plated)
- 101497 Tube connector G1/4 male for tube oØ 8 mm 90° - rotary type (brass nickel-plated)

Tube up to +260 °C

- 101394 Tube up to +260 °C oØ 8 mm x iØ 6 mm (PTFE)
- 104867 Tube connector G1/4 male for tube oØ 8 mm (stainless steel)

Heavy Duty hose up to +100 °C

- 101555 Heavy Duty hose up to +100 °C oØ 16 mm x iØ 9.5 mm (with NBR lining and fabric insert)
- 101554 Hose connector G1/4 male for hose iØ 9.5 mm - push-lock (steel, zinc-plated)

Tube up to +260 °C

- 113864 Tube up to +260 °C oØ 11 mm x iØ 8 mm 500 mm (PTFE / stainless steel)
- 101549 Tube up to +260 °C oØ 11 mm x iØ 8 mm 1000 mm (PTFE / stainless steel)
- 101550 Tube up to +260 °C oØ 11 mm x iØ 8 mm 1500 mm (PTFE / stainless steel)
- 104868 Cutting ring coupling R1/4 male for oØ 8 mm straight (stainless steel)

Reducers

- 104833 Reducer G1/8 male x G1/4 female (brass)
- 104876 Reducer M6 male x G1/4 female (stainless steel)
- 104838 Reducer M8x1 male x G1/4 female (brass)
- 104840 Reducer M10x1 male x G1/4 female (brass)

Lubrication pocket

- 101444 Lubrication pocket for gear lubrication

All metal to metal connections must be glued together with Loctite® 243™ (Art. No. 110278).

For more connecting parts please see our perma catalog at www.perma-tec.com