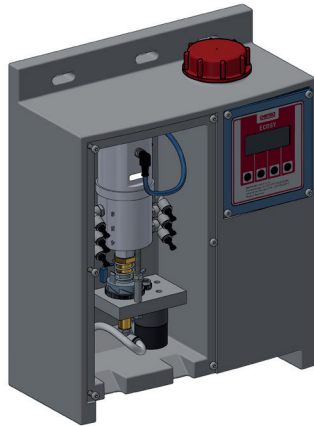


# perma ECOSY

Installation examples

All metal to metal connections must be glued together with Loctite® 243™ (Art. No. 110278).



perma ECOSY



Pump compartment



Art. No. 101494



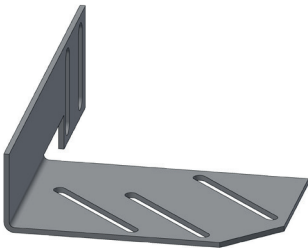
Art. No. 101447



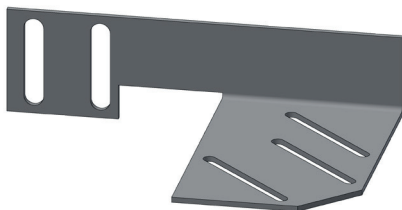
Art. No. 101551



Art. No. 104862



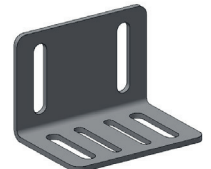
Art. No. 101534



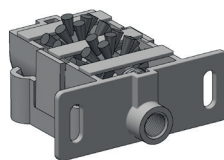
Art. No. 101533



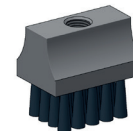
Art. No. 104864



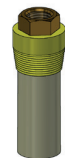
Art. No. 101429



Art. No. 101445



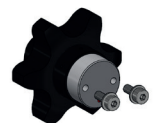
Art. No. 101397



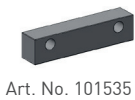
Art. No. 101396



Art. No. 117435



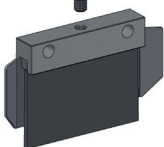
Art. No. 115824



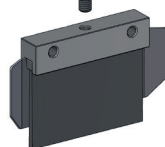
Art. No. 101535



Art. No. 114271



Art. No. 101525



Art. No. 101524

## Accessories

Art. No.	Name
101494	Tube up to +100 °C oØ 6 mm x iØ 4 mm (PA) - for ECOSY -
101447	Tube connector G1/4 male for tube oØ 6 mm straight (brass nickel-plated)
101551	Tube connector G1/4 male for tube oØ 6 mm 90° - rotary type (brass nickel-plated)
104862	Oil retaining valve G1/4 male x G1/4 female up to +60 °C (brass with plastic valve)
104863	Oil retaining valve G1/4 male x G1/4 female up to +150 °C (brass with metal valve)
101524	Oil brush for large chains up to +80 °C with tapped bore M6 (alu / polypropylene)
101525	Oil brush for large chains up to +80 °C with through hole (alu / polypropylene)
101533	Mounting bracket left for oil brush for large chains (stainless steel)
101534	Mounting bracket right for oil brush for large chains (stainless steel)
101535	Spacer for oil brush for large chains, width: 13 mm (alu)
114271	Spacer for oil brush for large chains, width: 6,5 mm (alu)
101445	Multipurpose chain lubrication box (plastic)
104864	Bracket (stainless steel)
101396	Oil brush Ø20 mm G1/4 female
101397	Oil brush up to +80 °C 40 x 30 mm G1/4 female thread on top
117435	Oil brush foam up to +80 °C 60 x 30 mm G1/4i female thread on top + lateral thread
101429	Mounting angle 50 x 50 x 70 x 2.5 mm holespacing 45 mm
115824	Lubrication pinion 1" for chain 16 B-1 + screw

All metal to metal connections must be glued together with Loctite® 243™ (Art. No. 110278).

For more connecting parts please see our perma catalog at [www.perma-tec.com](http://www.perma-tec.com)