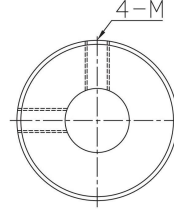
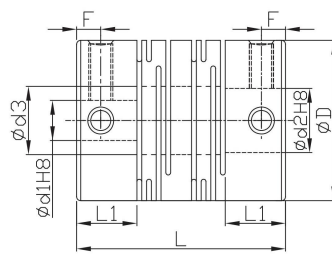


FAMML



- Zero backlash.
- The flexure allowed by the beam portion of the coupling is capable of accommodating parallel, angular, and axial misalignment.
- High wrench torque rigidity and sensitivity.
- Rotation character of clockwise or anti-clockwise are exactly the same.
- Free maintenance, oil-resist and anti-corrosiveness.
- Offset of angular, parallel, or axial deviation are individual allowed value, so couple reasons of axial offset appearing at same time would reduce the unit allowable value.



* $\text{Ød3} = \text{Ød2} + 0.5$

*When $\text{Ød1} < 4$ and $\text{Ød2} > 5$, there would be 3 set screws.
When Ød1 and Ød2 both smaller than 4, there would be 2 set screws.

Material	Surface finish	Accessories
Aluminum Alloy	Anodized	Set screw

Dimensions		Ød1	Ød2																L	L1	M Rough thread	F	
Model no.	ØD		2	3	4	5	6	6.35	7	8	9.525	10	11	12	14	15	16	18					
FAMML	8	2	•	•															14	3.5	2	1.7	
		3		•	•															18.5	5	2.5	2.5
	12	4			•	•														23	6.5	3	3
		5			•	•	•													26	7.5		
		6			•	•	•	•												31	8.5		
	16	6.35				•	•													41	12	4	6
		8				•	•													56	17		
		9.525					•	•															
		10						•	•														
	20	10																					
		12																					
		14																					
		15																					
	25	16																					
		18																					
		8																					
		9.525																					
	32	10																					
		12																					
		14																					
		15																					
	40	16																					
		18																					
		8																					
9.525																							

★ Moment of inertial torque and weight calculated by maximum diameter.

Specification		Allowable wrench torque (N·m)	Allowable misalignment			Static torsional stiffness (N·m/rad)	Max. RPM (r/min ⁻¹)	★ Moment of inertia (kg·m ²)	Screw fixing torque (N·m)	★ Weight (g)
Model no.	ØD		Angular (°)	Parallel (mm)	Axial (mm)					
FAMML	8	0.1	2	0.10	±0.2	25	48000	1.2*10 ⁻⁸	0.3	1.4
	12	0.4			±0.3	45	32000	8.3*10 ⁻⁸	0.5	3.7
	16	0.5			±0.4	80	24000	3.3*10 ⁻⁷	0.7	8.1
	20	1		0.15	±0.5	170	19000	9.0*10 ⁻⁷	1.7	14
	25	2				380	15000	2.6*10 ⁻⁶		27
	32	4				500	12000	9.6*10 ⁻⁶		60
	40	8				600	9600	3.2*10 ⁻⁵		4

Ordering Example: FAMML25 - 10 - 12 - 100 PCS
Model no. Ød1 * Ød2 Q'ty