

RTX Inquiry and order form for rotary indexers type RTX (1) – V1



Firm _____

Contact person _____

Telephone / Fax _____

Projekt- / order.-no. _____

Offer-no. _____

Date _____

Index plate Diameter [mm] _____
Depth [mm] _____
Material or weight _____

Fixtures and workpieces Quantity _____
Mass/Station [kg] _____
Reference diameter [mm] _____

☐ Stop mode (fixed step time, variable dwell time)

☐ Continuous mode (fixed step and dwell time)

Required step time [s] _____

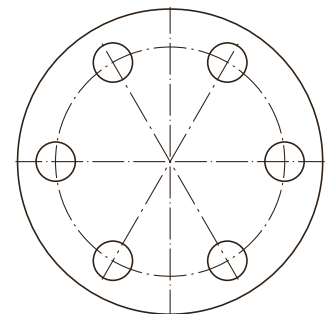
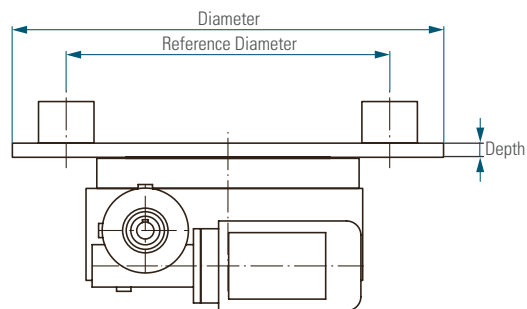
Required dwell time [s] (nur Durchlaufbetrieb) _____

Number of cycles [1/min] _____

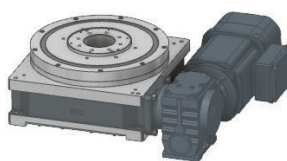
Required service life (actual cycle time, normal 12,000 h)

☐ Additional forces and loads (please give details)

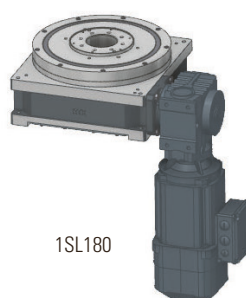
Please visit our website at www.taktomat.de where you can download a program for calculating the rotary table data!



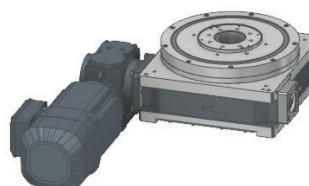
Possible mounting positions for the drive units



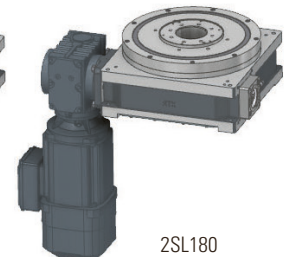
1SL90



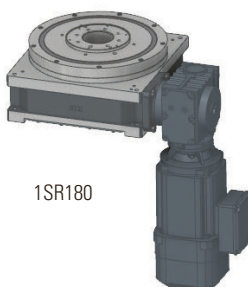
1SL180



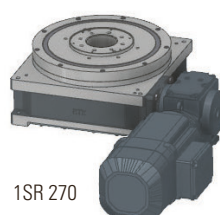
2SL90



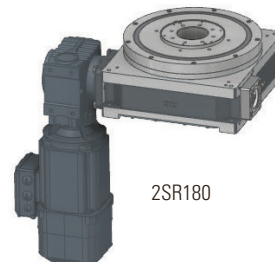
2SL180



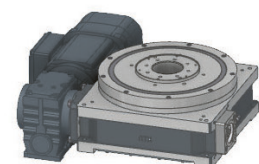
1SR180



1SR 270



2SR180



2SR270

RTX Inquiry and order form for rotary indexers type (2) – V1

Rotary indexer

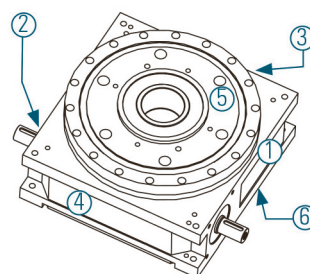
Type RTX (350-900) _____
Number of stops _____
Index angle other than standard (see load table) _____
Mounting position (underneath) no. _____
Direction of rotation of output flange
☐ Clockwise ☐ Counterclockwise ☐ Reverse
Cam lead ☐ Right (standard) ☐ Left
Standard central column ☐ Yes ☐ No
If No Extended by _____ mm
☐ Standard hole pattern
☐ Hole pattern as specified on drawing _____

Drive

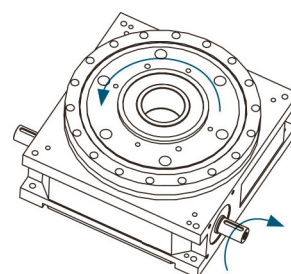
☐ With drive
Drive position (see page 1) _____
Terminal box position (see below) _____
Motor voltage ☐ 230/400-50 Hz
Other voltage _____
Brake voltage ☐ 24V DC
Other voltage _____
Manual release on brake ☐ Yes ☐ No
Motor Handwheel ☐ Yes ☐ No
Input Safety Clutch ☐ Yes ☐ No
Additional specifications (temperature sensor, connector assembly, brand...)

Universal Controller TIC

Universal Controller TIC ☐ Yes ☐ No



possible mounting positions



Cam Lead Right (Standard)

☐ Without drive
Direction of rotation of input shaft _____
Input shaft Ø _____ ; Length _____

Terminal box position

